

Flexible reversible ratchet 1/4"

188.1/1FBI



Profiles

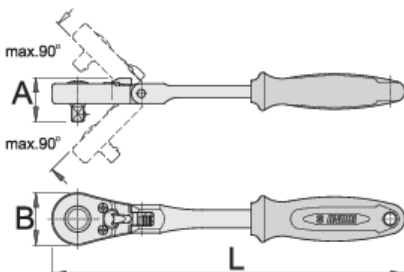


Product features

- material: premium flex chrome vanadium steel
- body drop forged
- entirely hardened and tempered
- surface finish: chrome plated to standard ISO 1456:2009
- ergonomic heavy duty double component handle

Advantages:

- with 40 - teeth
- 9° working angle
- flexible ratchet allows working with the handle inclination up to max 90° with the 22,5° steps
- Safety lock system
- The socket is simple released from the ratchet by pressing the button.





L

A

B



618367

1/4"

180

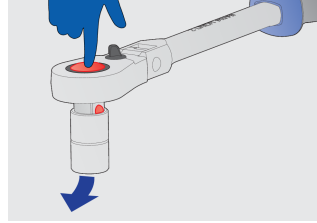
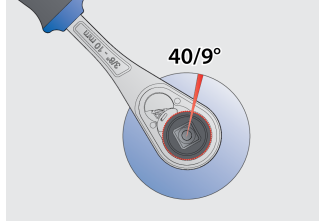
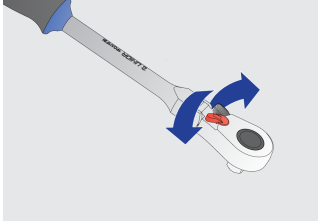
22

25

127

* Images of products are symbolic. All dimensions are in mm, and weight in grams. All listed dimensions may vary in tolerance.

Usage (pictures)



Spare parts



Set of spare parts for 188.1/1ABI and 188.1/1FBI