

Gereedschapswagen Europlus

920PLUS2



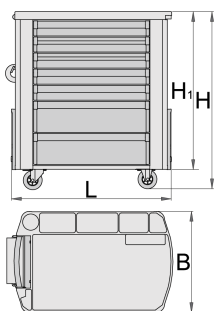
Profielen



Product attributen

- materiaal: premium PLUS plaatstaal
- central locking system with a lock and folding key
- lock with key included also foam keyring
- uniform closing mechanism for drawers with closing hooks
- multi - purpose shelf enables additional working place
- oil and acid resistant casters of a diameter of 125mm, one with brake, which blocks spinning and swiveling of the caster

- corners protected with anti-shock rubber
- full extension drawers with top quality ball-bearing slides
- drawers with non-slip interior synthetic lining
- 7 drawers (5 x L 565 x W 365 x H 70 mm, 2 x L 565 x W 385 x H 150 mm)
- basic dimensions with handle and casters L 810 x W 510 x H 945mm
- static load capacity of carriages without casters: 2000 kg
- dynamic load capacity of carriages: 500 kg
- maximum capacity of each drawer: 45kg
- coated with eco colour of Qualicoat quality standard
- total volume of drawers: 137 litres
- drawers compatible with SOS tool trays 1/3, 2/3, 3/3
- wide range of accessories



	L	B	H	H1	
617101	810	510	945	796	75600

* Afbeeldingen van producten zijn symbolisch. Alle afmetingen zijn in mm en gewicht in gram. Alle vermelde afmetingen kunnen variëren in tolerantie.

Gebruik (Afbeeldingen)



Accessoires



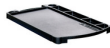
Tussenschotjes set- 4 stuks voor 920PLUS



Papierrolhouder - maxi rol voor 920PLUS



Bussenhouder voor 920PLUS



ABS werkblad for 920PLUS



Lege SOS-module voor 920PLUS, 940E en 940EV



Lege SOS-module voor 920PLUS, 940E en 940EV

Onderdelen



Lock with keys



Kogelgelagerde rails, set - 1 paar



Set of casters

Veiligheidstips



- Lock all your drawers before trying to roll the tool carriage into a new work area.
- Set the brakes on the locking casters after you have rolled the cabinet to your work area.
- Treat your tool carriage, tool chests, or tool boxes with respect.
- Always follow the prescribed max load capacity of individual drawers and the carriage as a whole.
- Always put heavier objects in the bottom drawers
- Always close drawers when not in use.
- Always follow manufacturer manual instructions regarding assembly and repair of your tools.



- Don't open two or more drawers at the same time, there is high chance of it tipping over.
- Don't throw tools into drawer, always put the tools in.
- Don't use an opened drawer as a working surface.
- Don't clean a lacquered surface with a solvent cleaner.
- Don't pull a tool carriage as you won't be able to see where you are headed. Push it in front of you so you can see where you are going.
- Don't stack a tool carriage with too many extra chests or tool trays; it may tip over at the most unexpected time.
- Don't roll a tool carriage with loose tools or parts on top of the carriage.
- Don't roll a tool carriage too quickly; a pot hole in the floor or some hardware on the floor may cause an accident.
- Don't overload the drawers; if you haven't got room for all of your tools, you need a larger tool carriage.

- Don't open up too many loaded drawers at a time; close each drawer before opening up another. Heavily loaded opened drawers are an invitation to tipping.