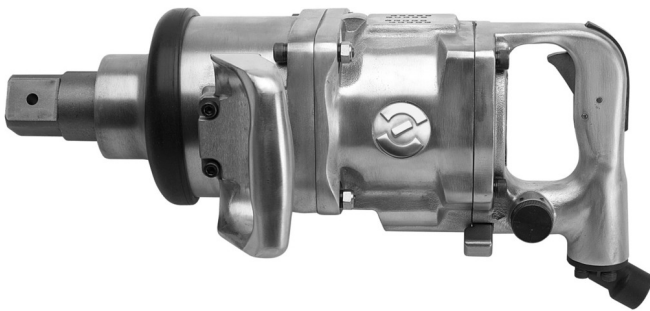


Clé à chocs 1 1/2"

1597



Profils



Description produit

- Vitesse tr/mn : 3000
- Couple max : 4065 Nm
- Pression d'air maximum : 6, 2 bars
- Consommation d'air : 435 l/min
- Entrée d'air : 1/2"
- Filet maximum M52

Avantages :

- Couple contrôlé
- Vissage rapide
- Large palette d'utilisations

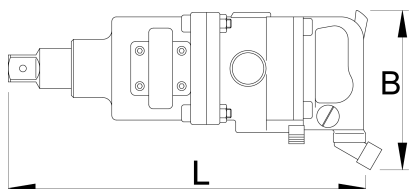
Utilisation:

- Industrie Automobile
- Industrie aéronautique

- Industrie agricole
- Industrie lourde
- Construction de machines
- Industrie navale
- Montage répétitif

Important !

- Toujours utiliser des douilles à chocs UNIOR



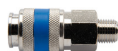
		B	L		
617691	1.1/2"	545	465	4065	18600

* Les images des produits ne sont pas contractuelles. Toutes les dimensions sont en mm, les poids en grammes.

Accessories



Embout fileté



Raccord rapide fileté



Régulateur, épurateur, lubrificateur 3/4"



Tuyau pneumatique spiralé

Safety tips



- The pressure in the tool during the operation has to be at least 6.2 bar for the tool to work properly.
- Regularly clean and dry the air filters and inlet air supply.



- Always disconnect tools not in use from the air supply.

- Always use clean and dry air with the correct mixture of oil, for maximum tool life.
- Check the joints and ensure that the tubes and other equipment are not damaged before use.
- All tools should be gently oiled prior to being stored.
- Always store pneumatic tools in dry places away from water.
- Always use original spare parts.
- Repairs can be performed only by authorised staff people authorised by Unior d.d.