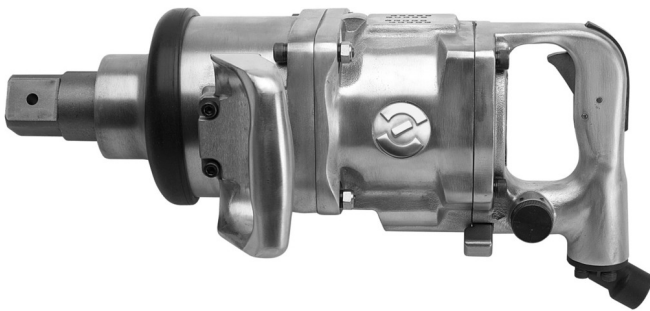


1.1/2"气动双向锤

1597



配置文件



产品属性

- 每分钟3000转的空载转速
- 最大扭矩4065 Nm
- 最大气压：6.2 Bar
- 空气消耗量435 升/分钟
- 1/2"进气口
- 最大螺栓尺寸M52

优势：

- 控制扭力
- 快速拧紧
- 应用范围广泛

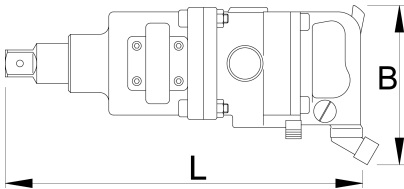
用途：

- 汽车行业
- 航空业

- 农业设备
- 重工业
- 大型建筑机械
- 造船业
- 单独安装

重要事项！

- 务必使用Unior气动套筒



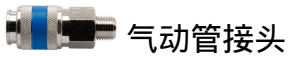
		B	L		
617691	1.1/2"	545	465	4065	18600

* Images of products are symbolic. All dimensions are in mm, and weight in grams. All listed dimensions may vary in tolerance.

Accessories



气动管接头



气动管接头



3/4"气动过滤调节器和润滑器



螺旋气动软管

Safety tips



- The pressure in the tool during the operation has to be at least 6.2 bar for the tool to work properly.
- Regularly clean and dry the air filters and inlet air supply.



- Always disconnect tools not in use from the air supply.

- Always use clean and dry air with the correct mixture of oil, for maximum tool life.
- Check the joints and ensure that the tubes and other equipment are not damaged before use.
- All tools should be gently oiled prior to being stored.
- Always store pneumatic tools in dry places away from water.
- Always use original spare parts.
- Repairs can be performed only by authorised staff people authorised by Unior d.d.