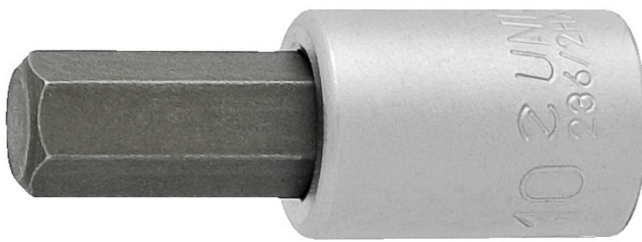


Capete chei tubule cu profil hexagonal exterior 3/8"

236/2HX

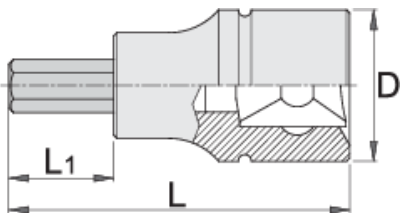



Profile






Caracteristicile produsului

- material: capete chei tubulare: crom-vanadiu, acoperire cromare
- bit: otel special de scule
- capul cheii este tratat in intregime
- conform cu standardul DIN 7422 (doarm pentru dimensiunile in mm)



		L	L1	D	
612082	4	48	22	18	39
612083	5	48	22	18	39

		L	L1	D	
612084	6	48	22	18	41
612085	8	48	22	18	45
612086	10	48	22	18	56
617662	1/8"	48	22	18	39
617663	9/64"	48	22	18	39
617664	5/32"	48	22	18	39
617665	3/16"	48	22	18	39
617666	7/32"	48	22	18	41
617667	1/4"	48	22	18	41
617668	5/16"	48	22	18	45
617669	3/8"	48	22	18	56

* Imaginea produsului este simbolica. Toate dimensiunile sunt exprimate în mm, greutatea în grame.

Safety (pictures)

