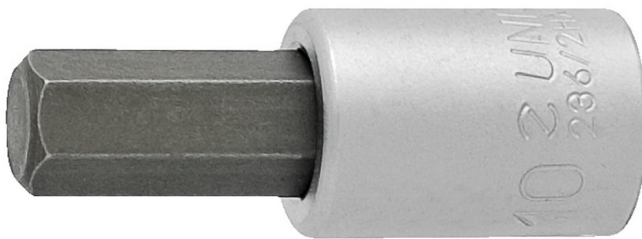


# Dopsleutel-schroevendraaier 3/8" inbus

236/2HX

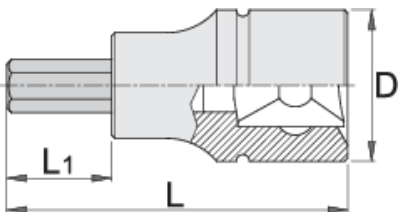





## Profielen






## Product attributen

- materiaal: dop: chroom vanadium, verchromd
- material: bit from premium plus carbon steel
- entirely hardened and tempered
- made according to standard DIN 7422 (only metric dimension)



		L	L1	D	
612082	4	48	22	18	39
612083	5	48	22	18	39
612084	6	48	22	18	41

		L	L1	D	
612085	8	48	22	18	45
612086	10	48	22	18	56
617662	1/8"	48	22	18	39
617663	9/64"	48	22	18	39
617664	5/32"	48	22	18	39
617665	3/16"	48	22	18	39
617666	7/32"	48	22	18	41
617667	1/4"	48	22	18	41
617668	5/16"	48	22	18	45
617669	3/8"	48	22	18	56

\* Afbeeldingen van producten zijn symbolisch. Alle afmetingen zijn in mm en gewicht in gram. Alle vermelde afmetingen kunnen variëren in tolerantie.

## Veiligheid (Afbeeldingen)

