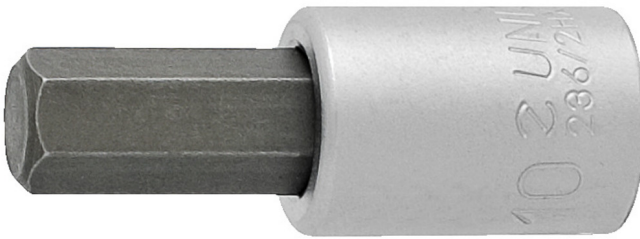


# Douilles tournevis 3/8" 6 pans

236/2HX

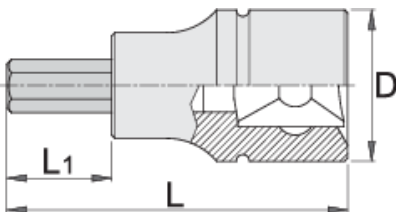





## Profils






## Description produit

- matière : douille fabriquée à partir d'acier Chrome Vanadium Premium Flex
- matière : embout fabriqué à partir d'acier au carbone Premium Plus
- Entièrement traitée thermiquement et trempée
- Conçues selon les normes ISO 7422(dimensions métriques)



		L	L1	D	
612082	4	48	22	18	39
612083	5	48	22	18	39
612084	6	48	22	18	41

		L	L1	D	
612085	8	48	22	18	45
612086	10	48	22	18	56
617662	1/8"	48	22	18	39
617663	9/64"	48	22	18	39
617664	5/32"	48	22	18	39
617665	3/16"	48	22	18	39
617666	7/32"	48	22	18	41
617667	1/4"	48	22	18	41
617668	5/16"	48	22	18	45
617669	3/8"	48	22	18	56

\* Les images des produits ne sont pas contractuelles. Toutes les dimensions sont en mm, les poids en grammes.

## Safety (pictures)

