

# 1.1/2"冲击万向节

234.6/4

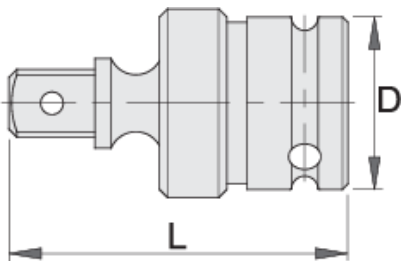


## 配置文件



## 产品属性

- 材料：铬钼钢
- 落锻，完全淬火与回火
- 表面处理：根据ISO 9717标准进行磷酸盐处理



617689



1.1/2"



182



86



4098

\* Images of products are symbolic. All dimensions are in mm, and weight in grams. All listed dimensions may vary in tolerance.

Safety (pictures)

