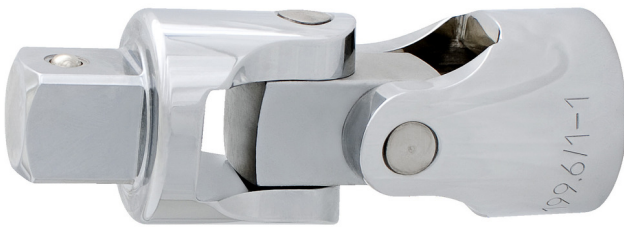


# 1" 万向节

199.6/1

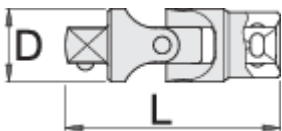


## 配置文件



## 产品属性

- 材料：铬钒钢
- 落锻，完全淬火与回火
- 表面处理：根据ISO 1456:2009标准镀铬
- 头部抛光
- 根据ISO3316标准生产



617658



1"

D

49

L

141



1120



Till end of stock

\* Images of products are symbolic. All dimensions are in mm, and weight in grams. All listed dimensions may vary in tolerance.