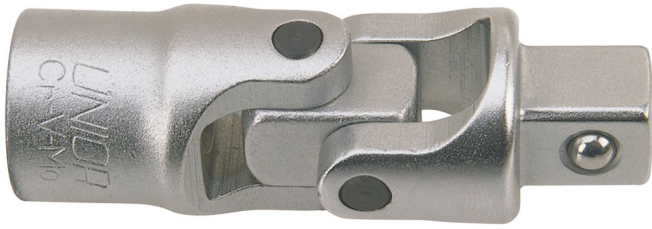


3/4" 万向节

197.6/1

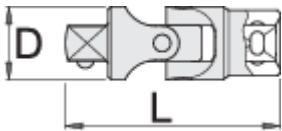


配置文件



产品属性

- 材料：铬钒钢
- 表面处理：根据ISO 1456:2009标准镀铬
- 落锻，完全淬火与回火
- 根据ISO3316标准生产



617657



3/4"

D

40

L

107



597

* Images of products are symbolic. All dimensions are in mm, and weight in grams. All listed dimensions may vary in tolerance.