

# cheie reglabila

250/1AP



## Profile

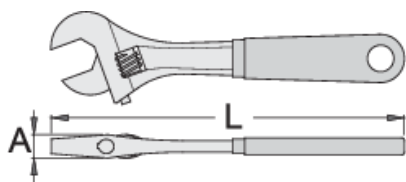
**Premium** 

## Standarde

DIN 3117, ISO 6787

## Caracteristicile produsului






- material:crome vanadium
- forjata, calire si revenire totala
- acoperire cromare conform ISO 1456:2009
- capete polizate
- cu scala
- Manere din doua straturi de plastic
- in conformitate cu standardul ISO 6787



L

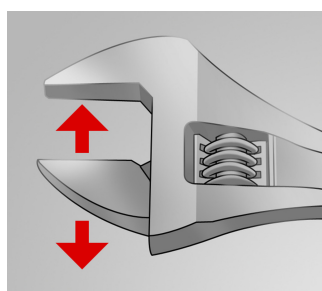
A



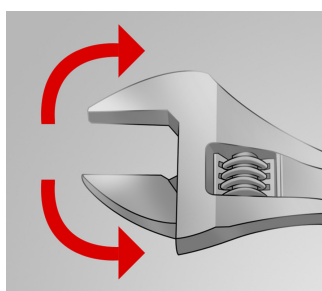
			L	A		
617246	200	8"	205	15	24	280
617247	250	10"	255	17	27	490
617248	300	12"	305	20	34	785
617249	380	16"	385	26	41	1395

\* Imaginea produsului este simbolica. Toate dimensiunile sunt exprimate în mm, greutatea în grame.

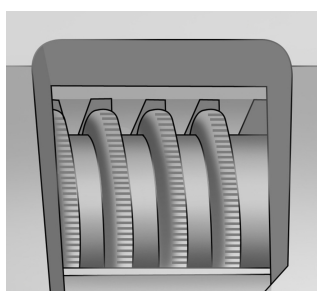
0 (pictures)



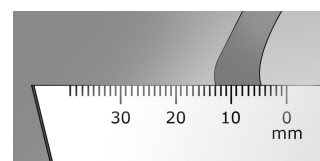
Falca reglabila



Cheia poate lucra in ambele sensuri de rotatie



Moleta de reglaj



Scara de masura

Photo (pictures)



Piese de schimb



Parti de schimb pentru cheile reglabile 250, 250 A

Safety tips



- Discard any wrench with a spread or damaged fixed jaw or a bent handle



Safety (pictures)

