

Moersleutel, verstelbaar

250/1AP



Profielen

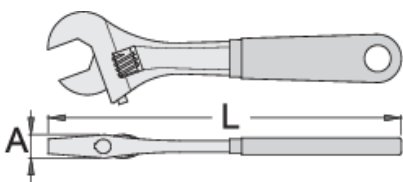


Standaard

DIN 3117, ISO 6787

Product attributen






- materiaal: premium chroom vanadium staal
- drop forged, entirely hardened and tempered
- surface finish: trivalent chrome plated according to ISO 1456:2009
- gepolijste kop
- with scale
- double plastic dipped handles
- made according to standard ISO 6787



L

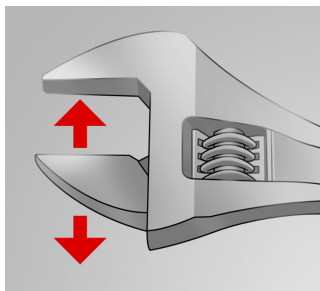
A



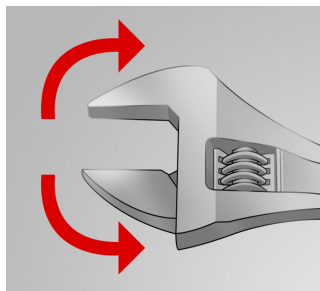
			L	A		
617246	200	8"	205	15	24	280
617247	250	10"	255	17	27	490
617248	300	12"	305	20	34	785
617249	380	16"	385	26	41	1395

* Afbeeldingen van producten zijn symbolisch. Alle afmetingen zijn in mm en gewicht in gram. Alle vermelde afmetingen kunnen variëren in tolerantie.

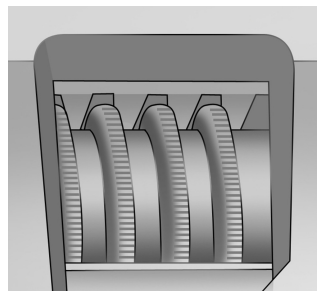
Gebruik (Afbeeldingen)



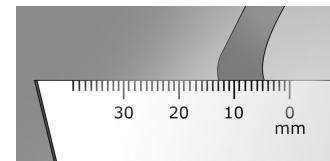
The adjustable jaw



The wrench sustains both directions of rotation



Toothed adjustable screw



Measuring scale

Foto (Afbeeldingen)



Onderdelen



Reserveonderdelen voor verstelbare moersleutel 250/1, 250 / 1A

Veiligheidstips



- Discard any wrench with a spread or damaged fixed jaw or a bent handle



Veiligheid (Afbeeldingen)

