

# Adjustable wrench

250/1AP



## 프로파일

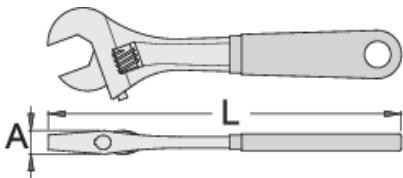
**Premium** 

## 표준

DIN 3117, ISO 6787

## 제품 특징






- material: premium chrome vanadium steel
- 낙하 단조, 완전 경화 및 담금질
- surface finish: trivalent chrome plated according to ISO 1456:2009
- polished head
- with scale
- double plastic dipped handles
- made according to standard ISO 6787



L

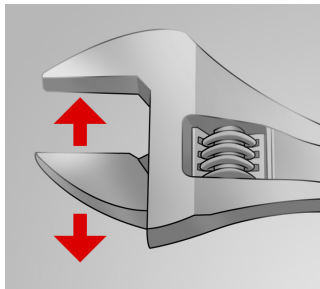
A



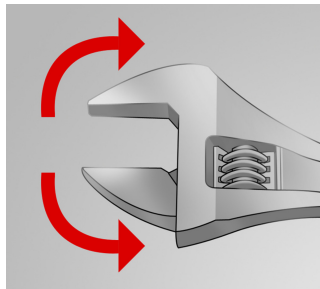
			L	A		
617246	200	8"	205	15	24	280
617247	250	10"	255	17	27	490
617248	300	12"	305	20	34	785
617249	380	16"	385	26	41	1395

\* Images of products are symbolic. All dimensions are in mm, and weight in grams. All listed dimensions may vary in tolerance.

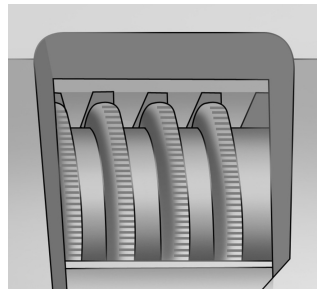
## 사용법 (사진)



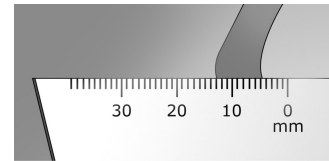
The adjustable jaw



The wrench sustains both directions of rotation



Toothed adjustable screw



Measuring scale

## 사진 (사진)



## 스페어 파트



Spare parts for adjustable wrench 250/1, 250/1A

## 안전 수칙



- 고정 죠가 손상되었거나 핸들이 구부러진 렌치는 폐기하십시오.

안전 (사진)

