

Chiave regolabile

250/1AP



Profili

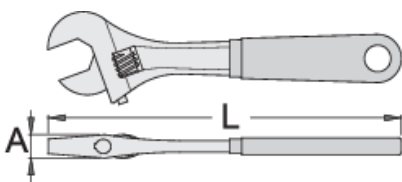
Premium 

Standard

DIN 3117, ISO 6787

Attributi del prodotto





- materiale: acciaio al cromo vanadio premium
- forgiato a caldo, interamente bonificato e temprato
- finitura superficiale: cromata ISO 1456:2009
- teste lucidate
- con scala
- impugnatura con doppia plastificazione a immersione
- conforme allo standard ISO 6787



L

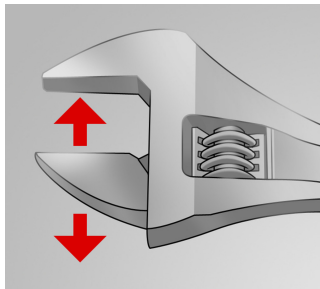
A



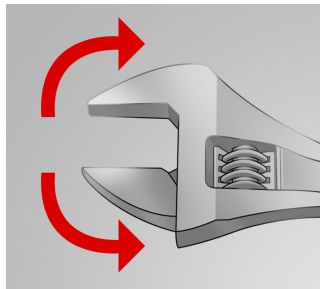
			L	A		
617246	200	8"	205	15	24	280
617247	250	10"	255	17	27	490
617248	300	12"	305	20	34	785
617249	380	16"	385	26	41	1395

* Le immagini dei prodotti sono puramente simboliche. Tutte le dimensioni sono in mm, peso in grammi.

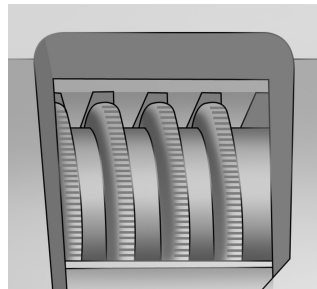
Utilizzo (pictures)



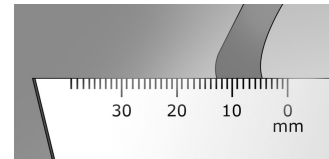
Ganascia regolabile



La chiave supporta entrambi i sensi di rotazione



Vite dentata regolabile



Scala di misura

Photo (pictures)



Parti di ricambio



Parti di ricambio per chiavi regolabili 250/1, 250/1A

Safety tips



● Discard any wrench with a spread or damaged fixed jaw or a bent handle



Safety (pictures)

