

# Adjustable wrench

250/1AP



## Profiles

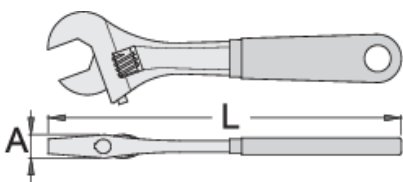
**Premium** 

## Standards

DIN 3117, ISO 6787

## Product features






- material: premium chrome vanadium steel
- drop forged, entirely hardened and tempered
- surface finish: trivalent chrome plated according to ISO 1456:2009
- polished head
- with scale
- double plastic dipped handles
- made according to standard ISO 6787



L

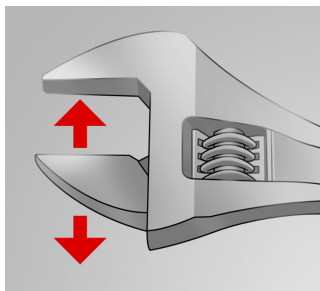
A



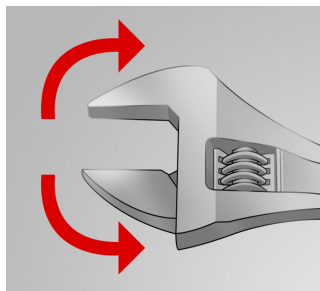
			L	A		
617246	200	8"	205	15	24	280
617247	250	10"	255	17	27	490
617248	300	12"	305	20	34	785
617249	380	16"	385	26	41	1395

\* Images of products are symbolic. All dimensions are in mm, and weight in grams. All listed dimensions may vary in tolerance.

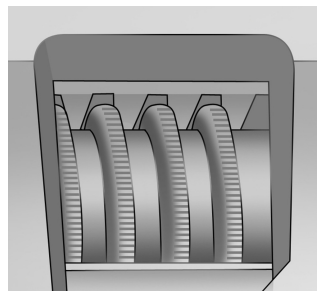
## Usage (pictures)



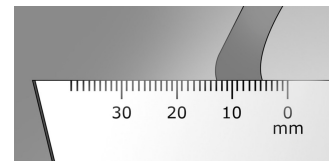
The adjustable jaw



The wrench sustains both directions of rotation



Toothed adjustable screw



Measuring scale

## Photo (pictures)



## Spare parts



Spare parts for adjustable wrench 250/1, 250/1A

## Safety tips



- Discard any wrench with a spread or damaged fixed jaw or a bent handle



Safety (pictures)

