

# Adjustable wrench

250/1AP



## Profielen

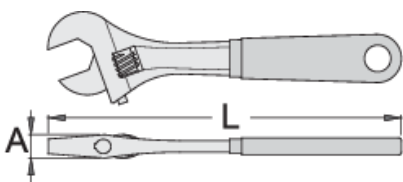


## Standaard

DIN 3117, ISO 6787

## Product attributen






- material: premium chrome vanadium steel
- Warm gesmeed, volledig warmtebehandeld en gehard
- surface finish: chrome plated according to ISO 1456:2009
- polished head
- with scale
- double plastic dipped handles
- made according to standard ISO 6787



L

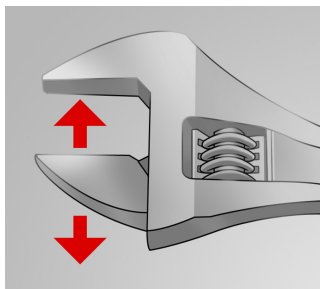
A



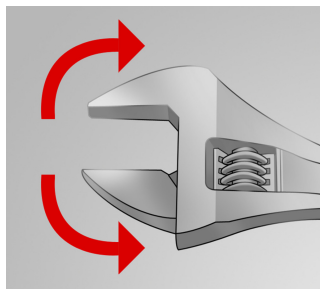
			L	A		
617246	200	8"	205	15	24	280
617247	250	10"	255	17	27	490
617248	300	12"	305	20	34	785
617249	380	16"	385	26	41	1395

\* Afbeeldingen van producten zijn symbolisch. Alle afmetingen zijn in mm, en het gewicht in grammen. Alle vermelde afmetingen kunnen variëren in tolerantie.

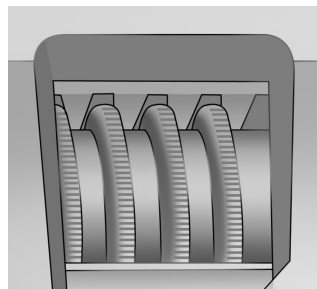
## Gebruik (Afbeeldingen)



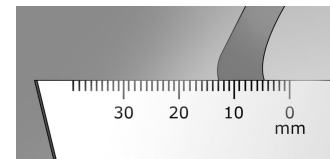
The adjustable jaw



The wrench sustains both directions of rotation



Toothed adjustable screw



Measuring scale

## Foto (Afbeeldingen)



## Onderdelen



Onderdelen voor verstelbare sleutel 250/1, 250/1A

## Veiligheidstips



● Gooi sleutels met een gespreide of beschadigde vaste bek of een gebogen handvat weg.



Veiligheid (Afbeeldingen)

