

Rivettatrice manuale

1300/6

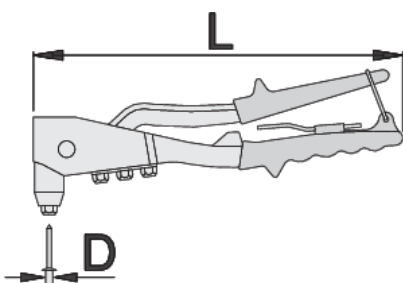


Profili



Attributi del prodotto

- The usability of the Unior 1300/6 Hand Riveter is its standout feature. Whether you're working on automotive repairs, metal fabrication, or projects at home, this tool provides the necessary leverage and control to securely fasten rivets with precision. Its ergonomic design reduces hand fatigue, allowing for extended working sessions without discomfort. The tool's simple mechanism enables quick rivet installation, enhancing efficiency and productivity in any workshop or job site environment. The Uniortools 1300/6 Hand Riveter is aimed at professionals in the fields of engineering, construction, and manufacturing, as well as hobbyists who require a reliable tool for occasional use.
- materiale: telaio di lega di alluminio, impugnatura a leva di acciaio di composizione speciale
- impugnatura: di forma ergonomica
- molla di riapertura
- completa con 4 naselli per fissare rivetti ciechi fino a 4, 8 mm o 3/16"
- con chiave per cambiare i naselli





L

D1

D2

D3

D4



615454

270

2.4 (3/32")

3.2 (1/8")

4.0 (5/32")

4.8 (3/16")

610

* Le immagini dei prodotti sono puramente simboliche. Tutte le dimensioni sono in mm, peso in grammi.

Utilizzo (pictures)

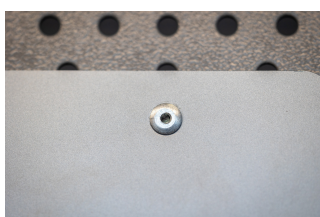
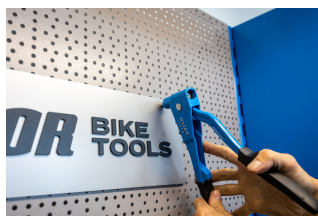


Photo (pictures)



Frequently asked questions

Are riveting pliers available with rivets?

Items 1300 and 1301 have no rivets attached.