

Karos szegecselő

1300/6

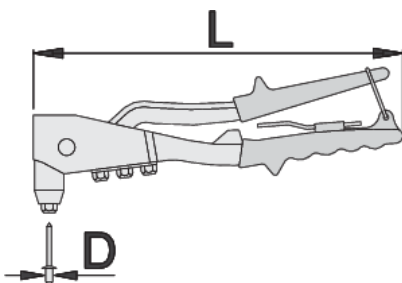


Profilok



Termékjellemzők

- The usability of the Unior 1300/6 Hand Riveter is its standout feature. Whether you're working on automotive repairs, metal fabrication, or projects at home, this tool provides the necessary leverage and control to securely fasten rivets with precision. Its ergonomic design reduces hand fatigue, allowing for extended working sessions without discomfort. The tool's simple mechanism enables quick rivet installation, enhancing efficiency and productivity in any workshop or job site environment. The Uniortools 1300/6 Hand Riveter is aimed at professionals in the fields of engineering, construction, and manufacturing, as well as hobbyists who require a reliable tool for occasional use.
- anyaga: váz - alumínium ötvözet, nyél - speciális acélötvözet
- markolat: ergonomikus kialakítású
- szerszám nyitását rugó segíti
- 4 betéttel szegecseléshez 4.8 mm-ig, vagy 3/16"-ig
- a betétcseréhez használható kulcs tartozék





L

D1

D2

D3

D4



615454

270

2.4 (3/32")

3.2 (1/8")

4.0 (5/32")

4.8 (3/16")

610

* A termékképek illusztrációk. Minden feltüntetett méret milliméterben, a tömegek grammban. Az összes feltüntetett méret eltérhet a toleranciának megfelelően.

Használat (pictures)

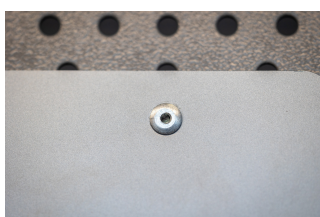
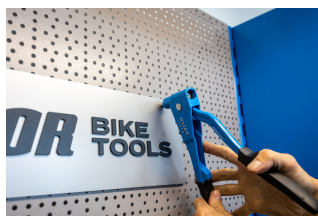


Photo (pictures)



Frequently asked questions

Are riveting pliers available with rivets?

Items 1300 and 1301 have no rivets attached.