

手动铆钉机

1300/6

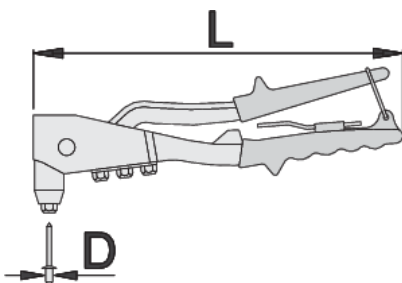


配置文件



产品属性

- The usability of the Unior 1300/6 Hand Riveter is its standout feature. Whether you're working on automotive repairs, metal fabrication, or projects at home, this tool provides the necessary leverage and control to securely fasten rivets with precision. Its ergonomic design reduces hand fatigue, allowing for extended working sessions without discomfort. The tool's simple mechanism enables quick rivet installation, enhancing efficiency and productivity in any workshop or job site environment. The Uniortools 1300/6 Hand Riveter is aimed at professionals in the fields of engineering, construction, and manufacturing, as well as hobbyists who require a reliable tool for occasional use.
- 材料：铝合金框架、特殊复合钢杆把手
- 手柄：符合人体工程学的形状
- 重启弹簧
- 带有4个导咀组件，用于最长4.8 mm或3/16"的盲孔铆钉
- 配导咀组件可更换扳手





L

D1

D2

D3

D4



615454

270

2.4 (3/32")

3.2 (1/8")

4.0 (5/32")

4.8 (3/16")

610

* Images of products are symbolic. All dimensions are in mm, and weight in grams. All listed dimensions may vary in tolerance.

用途 (pictures)

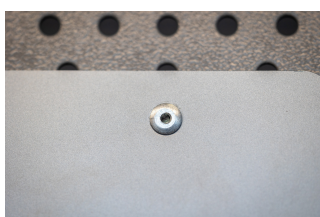
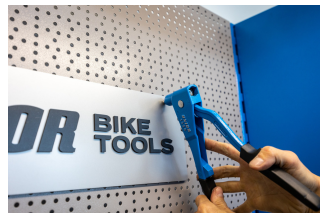
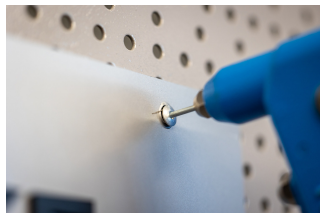


Photo (pictures)



Frequently asked questions

Are riveting pliers available with rivets?

Items 1300 and 1301 have no rivets attached.