

# Hand riveter

1300/6



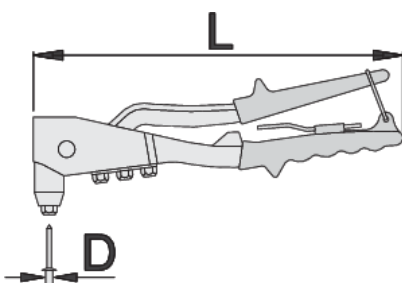
## Profielen

---



## Product attributen

- The usability of the Unior 1300/6 Hand Riveter is its standout feature. Whether you're working on automotive repairs, metal fabrication, or projects at home, this tool provides the necessary leverage and control to securely fasten rivets with precision. Its ergonomic design reduces hand fatigue, allowing for extended working sessions without discomfort. The tool's simple mechanism enables quick rivet installation, enhancing efficiency and productivity in any workshop or job site environment. The Uniortools 1300/6 Hand Riveter is aimed at professionals in the fields of engineering, construction, and manufacturing, as well as hobbyists who require a reliable tool for occasional use.
- material: frame from aluminium alloy, lever handle from special composition steel
- handle: ergonomic shape
- spring for reopening
- completed with 4 nose pieces for setting blind rivets up to 4,8 mm or 3/16"
- with wrench for the change of nose-pieces





L

D1

D2

D3

D4



615454

270

2.4 (3/32")

3.2 (1/8")

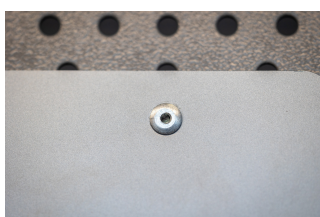
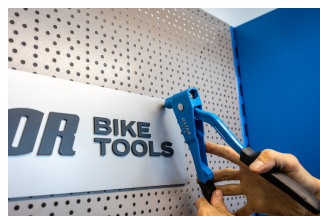
4.0 (5/32")

4.8 (3/16")

610

\* Afbeeldingen van producten zijn symbolisch. Alle afmetingen zijn in mm, en het gewicht in grammen. Alle vermelde afmetingen kunnen variëren in tolerantie.

## Gebruik (Afbeeldingen)



## Foto (Afbeeldingen)



## Veelgestelde vragen

### Zijn klinknageltangen verkrijgbaar met klinknagels?

Item 1300 heeft klinknagels, terwijl item 1301 geen klinknagels heeft.