

Dana për POP nitne

1300/6

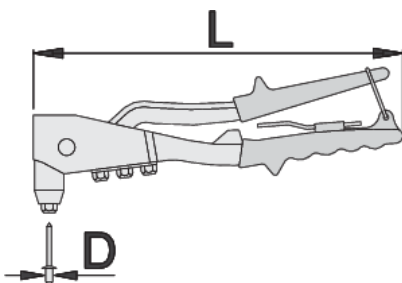


Profiles



Product features

- The usability of the Unior 1300/6 Hand Riveter is its standout feature. Whether you're working on automotive repairs, metal fabrication, or projects at home, this tool provides the necessary leverage and control to securely fasten rivets with precision. Its ergonomic design reduces hand fatigue, allowing for extended working sessions without discomfort. The tool's simple mechanism enables quick rivet installation, enhancing efficiency and productivity in any workshop or job site environment. The Uniortools 1300/6 Hand Riveter is aimed at professionals in the fields of engineering, construction, and manufacturing, as well as hobbyists who require a reliable tool for occasional use.
- Materiali: kornizë nga aliazh alumini, levë të trajtojë nga çeliku të veçantë përbërjen
- trajtuar: formë ergonomik
- pranverës për rihapjen
- përfunduar me 4 copa hundë për ngritjen thumba verbër deri në 4,8 mm ose 3/16 "
- me celes për ndryshimin e hundë-copë





L

D1

D2

D3

D4



615454

270

2.4 (3/32")

3.2 (1/8")

4.0 (5/32")

4.8 (3/16")

700

* Imazhet e produkteve janë simbolike. Të gjitha dimensionet janë në mm, pesha në gram. Të gjitha dimensionet e listuara mund të ndryshojnë në tolerancë.

Usage (pictures)

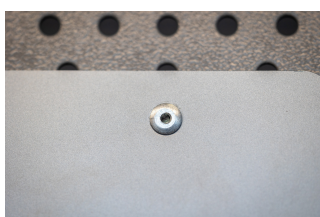
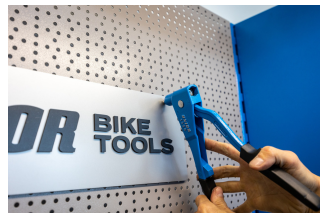
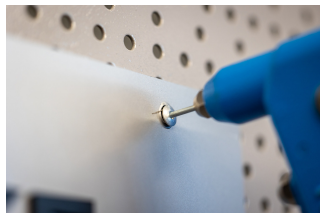


Photo (pictures)



Frequently asked questions

Are riveting pliers available with rivets?

Item 1300 has rivets attached, while item 1301 has no rivets attached.