

# Cheie reglabila

250/1



## Profile

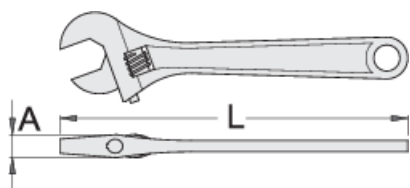


## Standarde

ISO 6787

## Caracteristicile produsului

- material:crome vanadium
- forjata, calire si revenire totala
- acoperire cromare conform EN12540
- capete polizate
- cu scala
- in conformitate cu standardul ISO 6787



611917



100



4"

L

108.4

A






10.5



13

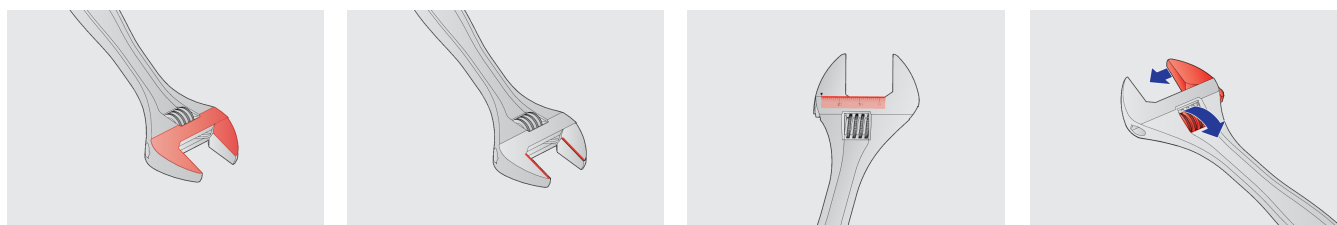


61

			L	A		
611918	150	6"	157.4	13	19	133
601016	200	8"	205.9	15	24	243
601017	250	10"	255.5	17	27	439
601018	300	12"	306.1	20	34	702
601019	380	16"	383	26	41	1315
605113	450	18"	460.5	32	48	1730
615148	600	24"	612.3	36	57	3240

\* Imaginea produsului este simbolica. Toate dimensiunile sunt exprimate în mm, greutatea în grame.

0 (pictures)



## Piese de schimb



Parti de schimb pentru cheile reglabile 250, 250 A

## Safety tips



- Discard any wrench with a spread or damaged fixed jaw or a bent handle



Safety (pictures)

