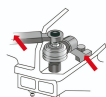


Torque multiplier

280



Usage



Profiles



Product features

- 5:1 torque multiplication, accuracy guaranteed better than +/-4%
- supplied with two reaction bar styles for maximum versatility
- Robust construction means minimal maintenance and long life
- Supplied in a carrying case. Ideal for inclusion in the heavy vehicle tool kit

Advantages:

- Exactly defined multiplication – no need of tabular conversions
- Simple use does not require any additional knowledge

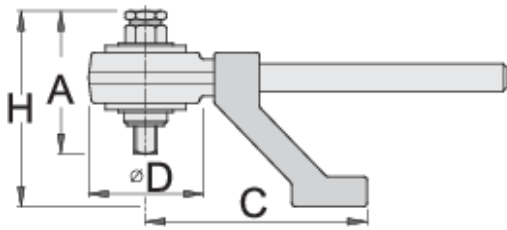
Usage:

- building construction
- agricultural equipment
- heavy industry
- larger construction machinery

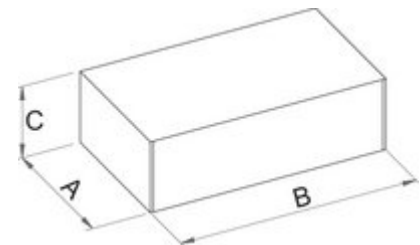
- shipbuilding industry
- aircraft industry
- train compositions
- refineries

Important!

- The use of Unior IMPACT sockets is recommended.
- We shall never exceed the requested torque starting point of the multiplier.



Barcode	Socket Size	Length	Torque (Nm)	Torque (lbf·ft)	Ratio	D	A	C	H	Weight
616804	1/2" (32mm)	3/4"	1300	960	5 : 1	108	126	210	180	7000
616805	3/4" (36mm)	1"	2700	2000	5 : 1	108	128	210	186	7000



Retail packaging

Barcode	MA	MB	MC	Weight
616804	270	370	120	7000
616805	270	370	120	7000

Transport packaging

Barcode	Hand	TA	TB	TC	Weight
616804	1				
616805	1				