

1.1/2" 气动附件

234.8/4

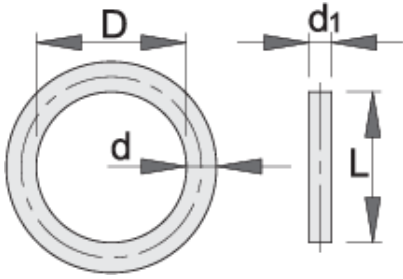





配置文件



产品属性

- 针材料: 铬钼钢
- 环材料: 橡胶
- 表面光洁度: 按DIN标准磷化



		D	d2	L	d1	
617126	80 - 100	75	5.7	75	6	55
617127	105 - 120	85	5.7	84	6	40

* Images of products are symbolic. All dimensions are in mm, and weight in grams. All listed dimensions may vary in tolerance.

用途 (pictures)

