

Insulated adjustable wrench

250/1VDP



Profiles



Standards

DIN EN IEC 60900 (VDE 0682-201):2019-04; EN IEC 60900:2018

Product features

- material: premium chrome vanadium steel
- surface finish: trivalent chrome plated according to ISO 1456:2009
- made according to standard ISO 6787 and EN IEC 60900:2018

Advantages:

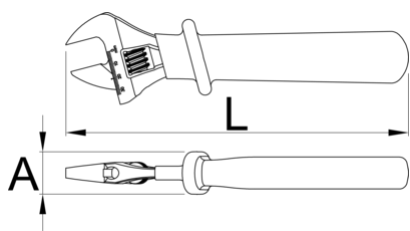
- double layered - double coloured insulation for additional safety
- controlled according to standard EN IEC 60900
- with scale

Important!

- if second layer is visible, replace your insulated tool with a new one.

Caution!

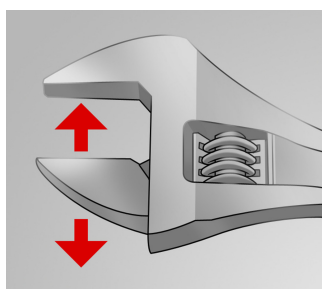
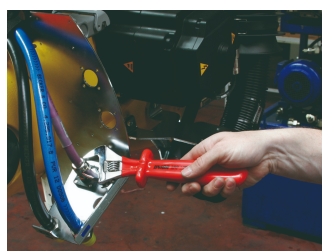
- Adjust the tool before using! Adjustment while working is life dangerous.



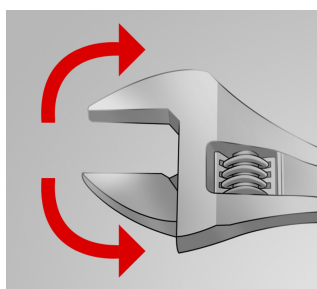
Barcode	↔	↔"	L	A	mm	Icon
621917	150	6"	165	25	19	182
616849	200	8"	210	31	24	355
616850	250	10"	260	31	27	579
616851	300	12"	310	32	34	871
622065	380	16"	390	37	41	1505

* Images of products are symbolic. All dimensions are in mm, and weight in grams. All listed dimensions may vary in tolerance.

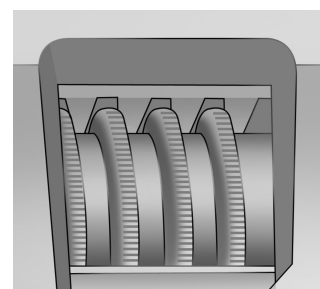
Usage (pictures)



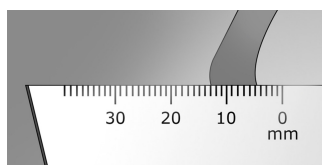
The adjustable jaw



The wrench sustains both directions of rotation



Toothed adjustable screw



Measuring scale

Spare parts



Spare parts for adjustable wrench 250/1, 250/1A

Safety tips



- Discard any wrench with a spread or damaged fixed jaw or a bent handle