

绝缘可调扳手

250/1VDP



配置文件



标准

DIN EN IEC 60900 (VDE 0682-201):2019-04; EN IEC 60900:2018

产品属性

- 材料：铬钒钢
- 表面处理：根据ISO 1456:2009标准镀铬
- 根据DIN EN IEC 60900 (VDE 0682-201):2019-04; EN IEC 60900:2018标准生产

优势：

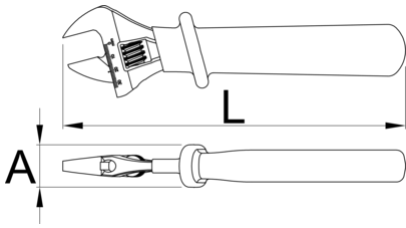
- 双层 - 提供额外安全的双色绝缘
- 电测试控制
- 带刻度

重要事项！

- 如果第二层显露出来，请立即更换您的VDE工具

谨慎！

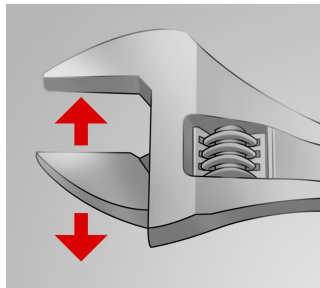
- 使用前请调整工具!工作时调整危险



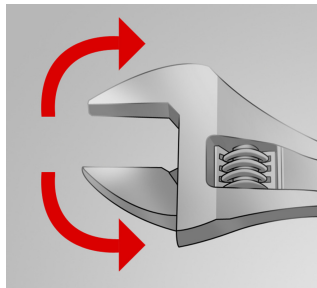
Barcode	Length (mm)	Length (in)	L (mm)	A (mm)	mm	Weight (g)	Icon
616849	200	8"	210	31	24	355	
616850	250	10"	260	31	27	579	
616851	300	12"	310	32	34	871	

* Images of products are symbolic. All dimensions are in mm, and weight is in grams. All listed dimensions may vary in tolerance.

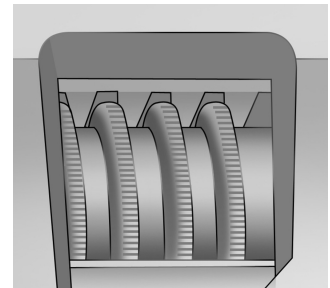
用途 (pictures)



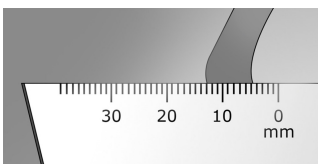
The adjustable jaw



The wrench sustains both directions of rotation



Toothed adjustable screw



Measuring scale

配件



可调扳手250/1、250/1A的备用零件

Safety tips



- Discard any wrench with a spread or damaged fixed jaw or a bent handle