

# Flat ring wrench

182/2A






## Profiles






## Product features

- material: premium chrome vanadium steel
- drop forged, entirely hardened and tempered
- surface finish: trivalent chrome plated according to ISO 1456:2009
- ring part with LIFE profile
- made according to standard DIN 837 (only metric dimension)

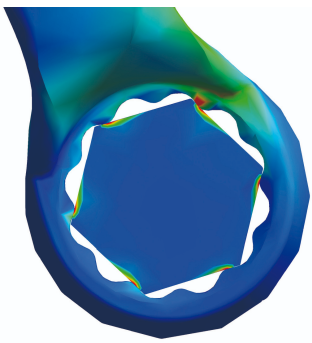


		L	B1	B2	A	
612004	6 x 7	97	10	11.3	4.6	11
612005	8 x 9	112	12.7	14	5.6	19
612006	10 x 11	132	15.6	16.5	6.6	29
612007	12 x 13	147	18	19	7.6	44
612008	14 x 15	162	20.5	21.5	7.6	59
612009	16 x 17	172	23.2	24.2	8.6	90

		L	B1	B2	A	
612010	18 x 19	186	25.9	27.4	9.6	112
612011	20 x 22	206	28.9	31.8	11	161
612013	24 x 26	258	34.8	37.3	11.5	289
612015	27 x 29	298	38.3	41.8	13	378
612016	30 x 32	318	42.7	45.2	13.5	467

\* Images of products are symbolic. All dimensions are in mm, and weight in grams. All listed dimensions may vary in tolerance.

### Usage (pictures)



LIFE profile