

boru uzatmalı yıldız anahtar

180/1



Profiles

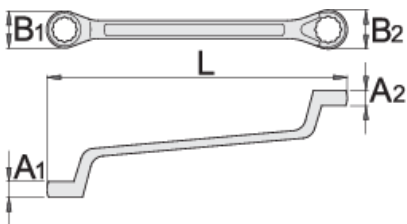


Standards

ISO 10104

Product features

- malzeme: krom vanadyum
- sıcak dövme, tamamen sertleştirilmiş ve temperlenmiş
- yüzey bitirme: ISO 1456:2009 standardına göre krom kaplamalı
- cilalı başlık
- LIFE profilli halka parçası
- ISO 10104 standardına göre yapılmıştır (yalnızca metrik boyut)
- made according to standard DIN 838



L

B1

B2

A1

A2





L

B1

B2

A1

A2



| | | | | | | | |
|--------|---------|-----|------|------|------|------|-----|
| 600511 | 6 x 7 | 178 | 10.3 | 11.8 | 5.5 | 6.1 | 48 |
| 600512 | 8 x 9 | 190 | 14 | 15,5 | 6.7 | 7.3 | 60 |
| 600513 | 8 x 10 | 166 | 12,9 | 15,5 | 6 | 8 | 50 |
| 602663 | 9 x 11 | 205 | 15,5 | 18,5 | 7,3 | 8,4 | 65 |
| 600514 | 10 x 11 | 205 | 17 | 18,5 | 7.9 | 8.4 | 81 |
| 602997 | 10 x 12 | 210 | 17 | 20 | 7.9 | 9 | 86 |
| 600516 | 12 x 13 | 220 | 20 | 21,5 | 9 | 9.5 | 108 |
| 600517 | 12 x 14 | 205 | 17.7 | 20.3 | 9 | 10 | 95 |
| 600518 | 13 x 15 | 235 | 21,5 | 24 | 9.5 | 10.5 | 144 |
| 600519 | 13 x 17 | 258 | 21,5 | 27 | 9.5 | 11.5 | 172 |
| 600520 | 14 x 15 | 235 | 23 | 24 | 10 | 10.5 | 140 |
| 600521 | 14 x 17 | 257 | 19,8 | 23,6 | 10 | 12 | 173 |
| 600522 | 16 x 17 | 258 | 26 | 27 | 11 | 11.4 | 187 |
| 603123 | 16 x 18 | 259 | 22,9 | 25,4 | 11 | 12 | 205 |
| 600523 | 17 x 19 | 270 | 27 | 30 | 11.4 | 12.4 | 233 |
| 600524 | 18 x 19 | 270 | 29 | 30 | 11.9 | 12.4 | 230 |
| 600525 | 19 x 22 | 295 | 30 | 35 | 12.4 | 13.7 | 308 |
| 600526 | 20 x 22 | 295 | 32 | 35 | 12.8 | 13.7 | 320 |
| 600527 | 21 x 23 | 305 | 33 | 37 | 13.3 | 14,1 | 336 |
| 600528 | 22 x 24 | 315 | 35 | 38 | 13.7 | 14,6 | 368 |
| 600529 | 24 x 26 | 325 | 38 | 41 | 14.6 | 15,4 | 459 |
| 600530 | 24 x 27 | 325 | 38 | 42 | 14.6 | 15,8 | 453 |
| 600531 | 25 x 28 | 335 | 40 | 44 | 15 | 16,2 | 522 |
| 600532 | 27 x 29 | 335 | 42 | 45 | 15.8 | 16,6 | 589 |
| 600533 | 27 x 30 | 360 | 38,5 | 42,7 | 15 | 16 | 647 |
| 600534 | 27 x 32 | 360 | 42 | 49 | 15.8 | 17,8 | 672 |
| 600535 | 30 x 32 | 370 | 46 | 49 | 17 | 17,8 | 680 |
| 603124 | 30 x 36 | 395 | 43 | 48 | 15 | 18 | 845 |
| 600536 | 32 x 36 | 410 | 48.2 | 54.2 | 17.8 | 19.4 | 915 |



L

B1

B2

A1

A2



600537

36 x 41

450

48

56

19

21

945

602664

41 x 46

472

56

61

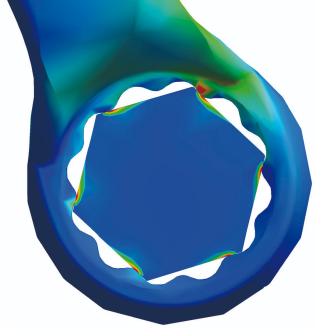
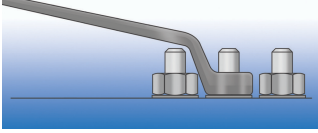
21

23

1430

* Ürünlerin resimleri semboliktir. Bütün boyutlar mm ve ağırlık gram cinsindedir.

Usage (pictures)



LIFE profile