

Ringsleutel

180/1



Profielen

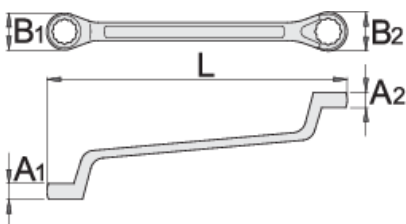


Standaard

ISO 10104

Product attributen

- materiaal: premium chroom vanadium staal
- drop forged, entirely hardened and tempered
- surface finish: trivalent chrome plated according to ISO 1456:2009
- gepolijste kop
- ring part with LIFE profile
- made according to standard ISO 10104 (only metric dimension)
- made according to standard DIN 838



L





B1

B2

A1

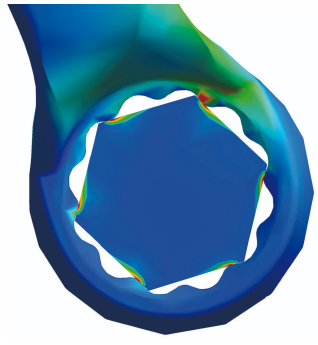
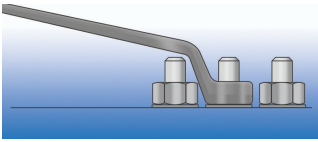
A2



		L	B1	B2	A1	A2		
600511	6 x 7	178	10,3	11,8	5,5	6,1	48	
600512	8 x 9	190	14	15,5	6,7	7,3	60	
600513	8 x 10	166	12,9	15,5	6	8	50	
602663	9 x 11	205	15,5	18,5	7,3	8,4	65	
600514	10 x 11	205	17	18,5	7,9	8,4	81	
600516	12 x 13	220	20	21,5	9	9,5	108	
600518	13 x 15	235	21,5	24	9,5	10,5	144	
600519	13 x 17	258	21,5	27	9,5	11,5	172	
600520	14 x 15	235	23	24	10	10,5	140	
600522	16 x 17	258	26	27	11	11,4	187	
603123	16 x 18	259	22,9	25,4	11	12	205	
600523	17 x 19	270	26,3	29,2	11,4	12,4	233	
600524	18 x 19	270	29	30	11,9	12,4	233	
600525	19 x 22	295	30	35	12,4	13,7	308	
600526	20 x 22	295	32	35	12,8	13,7	320	
600527	21 x 23	305	33	37	13,3	14,1	336	
600529	24 x 26	325	38	41	14,6	15,4	459	
600530	24 x 27	325	38	42	14,6	15,8	453	
600531	25 x 28	335	40	44	15	16,2	522	
600534	27 x 32	360	42	49	15,8	17,8	672	
600535	30 x 32	370	46	49	17	17,8	680	
603124	30 x 36	395	43	48	15	18	845	
600536	32 x 36	410	48,2	54,2	17,8	19,4	915	
600537	36 x 41	450	48	56	19	21	945	
602664	41 x 46	472	56	61	21	23	1430	

* Afbeeldingen van producten zijn symbolisch. Alle afmetingen zijn in mm en gewicht in gram. Alle vermelde afmetingen kunnen variëren in tolerantie.

Gebruik (Afbeeldingen)



LIFE-profiel