

# 高颈梅花双头扳手

180/1



## 配置文件

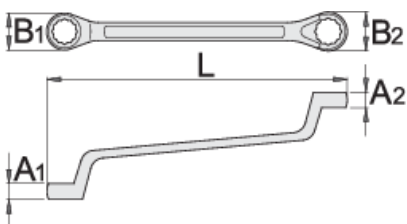


## 标准

ISO 10104

## 产品属性

- 材料：铬钒钢
- 落锻，完全淬火与回火
- 表面处理：根据ISO 1456:2009标准镀铬
- 头部抛光
- LIFE环形设计的梅花端头
- 根据标准ISO 10104生产（只限公制规格）
- made according to standard DIN 838



L



B1

B2

A1

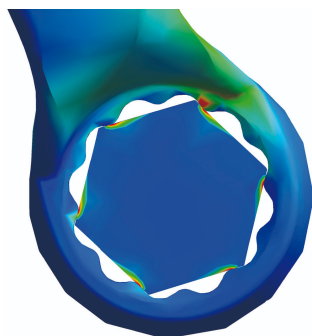
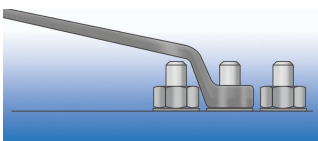
A2



		L	B1	B2	A1	A2		
600511	6 x 7	178	10.3	11.8	5.5	6.1	48	
600512	8 x 9	190	14	15,5	6.7	7.3	60	
602663	9 x 11	205	15,5	18,5	7,3	8,4	65	
600514	10 x 11	205	17	18,5	7.9	8.4	81	
600516	12 x 13	220	20	21,5	9	9.5	108	
600520	14 x 15	235	23	24	10	10.5	140	
600522	16 x 17	258	26	27	11	11.4	187	
603123	16 x 18	259	22,9	25,4	11	12	205	
600524	18 x 19	270	29	30	11.9	12.4	233	
600525	19 x 22	295	30	35	12.4	13.7	308	
600526	20 x 22	295	32	35	12.8	13.7	320	
600527	21 x 23	305	33	37	13.3	14,1	336	
600529	24 x 26	325	38	41	14.6	15,4	459	
600530	24 x 27	325	38	42	14.6	15,8	453	
600531	25 x 28	335	40	44	15	16,2	522	
600534	27 x 32	360	42	49	15.8	17,8	672	
600535	30 x 32	370	46	49	17	17,8	680	
603124	30 x 36	395	43	48	15	18	845	
600537	36 x 41	450	48	56	19	21	945	
602664	41 x 46	472	56	61	21	23	1430	

\* Images of products are symbolic. All dimensions are in mm, and weight in grams. All listed dimensions may vary in tolerance.

## 用途 (pictures)



LIFE profile

