

# Ključ okasti

180/1



## Profili

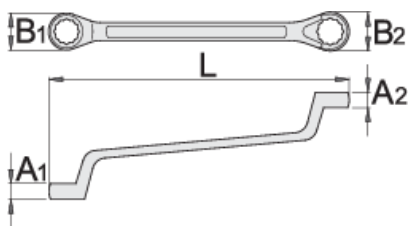


## Standardi

ISO 10104

## Atributi proizvoda

- materijal: Premium krom-vanadij
- kovan, u cijelosti ojačan i zakaljen
- kromirani (ISO 1456:2009)
- polirane glave
- obuhvatni dio sa LIFE profilom
- izrađeni prema standardu ISO10104 (samo metričke dimenzije)
- made according to standard DIN 838



L

B1

B2

A1

A2





L

B1

B2

A1

A2



600511	6 x 7	178	10.3	11.8	5.5	6.1	48	
600512	8 x 9	190	14	15,5	6.7	7.3	60	
600513	8 x 10	166	12,9	15,5	6	8	50	
602663	9 x 11	205	15,5	18,5	7,3	8,4	65	
600514	10 x 11	205	17	18,5	7.9	8.4	81	
602997	10 x 12	210	17	20	7.9	9	86	Till end of stock
600516	12 x 13	220	20	21,5	9	9.5	108	
600517	12 x 14	205	17.7	20.3	9	10	95	Till end of stock
600518	13 x 15	235	21,5	24	9.5	10.5	144	Till end of stock
600519	13 x 17	258	21,5	27	9.5	11.5	172	Till end of stock
600520	14 x 15	235	23	24	10	10.5	140	
600521	14 x 17	257	19,8	23,6	10	12	173	Till end of stock
600522	16 x 17	258	26	27	11	11.4	187	
603123	16 x 18	259	22,9	25,4	11	12	205	
600523	17 x 19	270	27	30	11.4	12.4	233	Till end of stock
600524	18 x 19	270	29	30	11.9	12.4	233	
600525	19 x 22	295	30	35	12.4	13.7	308	
600526	20 x 22	295	32	35	12.8	13.7	320	
600527	21 x 23	305	33	37	13.3	14,1	336	
600528	22 x 24	315	35	38	13.7	14,6	368	
600529	24 x 26	325	38	41	14.6	15,4	459	
600530	24 x 27	325	38	42	14.6	15,8	453	
600531	25 x 28	335	40	44	15	16,2	522	
600532	27 x 29	335	42	45	15.8	16,6	589	Till end of stock
600533	27 x 30	360	38,5	42,7	15	16	647	Till end of stock
600534	27 x 32	360	42	49	15.8	17,8	672	
600535	30 x 32	370	46	49	17	17,8	680	
603124	30 x 36	395	43	48	15	18	845	
600536	32 x 36	410	48.2	54.2	17.8	19.4	915	



L

B1

B2

A1

A2



600537

36 x 41

450

48

56

19

21

945

602664

41 x 46

472

56

61

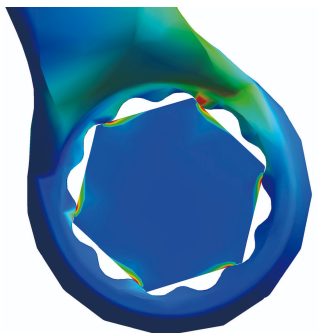
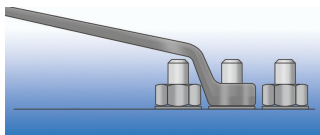
21

23

1430

\* Slike proizvoda su simbolične. Sve dimenzije su u mm, masa je u g.

## Upotreba (pictures)



LIFE profile