

Steeksleutel

180/1



Profielen

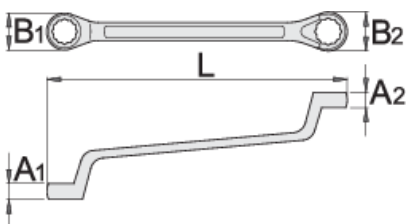


Standaard

ISO 10104

Product attributen

- material: premium chrome vanadium steel
- drop forged, entirely hardened and tempered
- surface finish: chrome plated according to ISO 1456:2009
- polished head
- ring part with LIFE profile
- made according to standard ISO 10104 (only metric dimension)
- made according to standard DIN 838



L

B1

B2

A1

A2





L

B1




B2

A1

A2

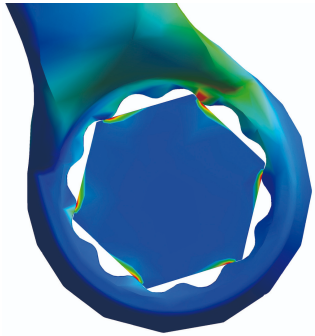
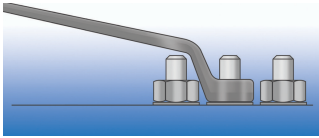


600511	6 x 7	178	10.3	11.8	5.5	6.1	48
600512	8 x 9	190	14	15,5	6.7	7.3	60
600513	8 x 10	166	12,9	15,5	6	8	50
602663	9 x 11	205	15,5	18,5	7,3	8,4	65
600514	10 x 11	205	17	18,5	7.9	8.4	81
602997	10 x 12	210	17	20	7.9	9	86
600516	12 x 13	220	20	21,5	9	9.5	108
600517	12 x 14	205	17.7	20.3	9	10	95
600518	13 x 15	235	21,5	24	9.5	10.5	144
600519	13 x 17	258	21,5	27	9.5	11.5	172
600520	14 x 15	235	23	24	10	10.5	140
600521	14 x 17	257	19,8	23,6	10	12	173
600522	16 x 17	258	26	27	11	11.4	187
603123	16 x 18	259	22,9	25,4	11	12	205
600523	17 x 19	270	27	30	11.4	12.4	233
600524	18 x 19	270	29	30	11.9	12.4	230
600525	19 x 22	295	30	35	12.4	13.7	308
600526	20 x 22	295	32	35	12.8	13.7	320
600527	21 x 23	305	33	37	13.3	14,1	336
600528	22 x 24	315	35	38	13.7	14,6	368
600529	24 x 26	325	38	41	14.6	15,4	459
600530	24 x 27	325	38	42	14.6	15,8	453
600531	25 x 28	335	40	44	15	16,2	522
600532	27 x 29	335	42	45	15.8	16,6	589
600533	27 x 30	360	38,5	42,7	15	16	647
600534	27 x 32	360	42	49	15.8	17,8	672
600535	30 x 32	370	46	49	17	17,8	680
603124	30 x 36	395	43	48	15	18	845
600536	32 x 36	410	48.2	54.2	17.8	19.4	915

		L	B1	B2	A1	A2	
600537	36 x 41	450	48	56	19	21	945
602664	41 x 46	472	56	61	21	23	1430

* Afbeeldingen van producten zijn symbolisch. Alle afmetingen zijn in mm, en het gewicht in grammen. Alle vermelde afmetingen kunnen variëren in tolerantie.

Gebruik (Afbeeldingen)



LIFE-profiel