

Combination wrench, long type

120/1



Profiles

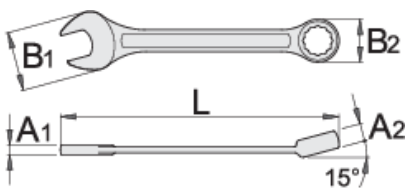


Standards

ISO 7738

Product features

- material: premium chrome vanadium steel
- drop forged, entirely hardened and tempered
- surface finish: trivalent chrome plated according to ISO 1456:2009
- polished head
- ring part with LIFE profile
- made according to standard ISO 7738 (metric dimensions only)



Barcode	mm	L	B2	B1	A2	A1	Icon	Icon
616747	4.5	105	8	14	4	3.2	7	
616748	5	119	10.4	14.5	5	3.5	7	



L

B2

B1

A2

A1



600357	6	119	10.4	14.5	5	3.5	16
600358	7	129	11.5	16.5	5.8	3.9	15
600359	8	141	13.2	18.5	6.9	3.9	23
600360	9	152	14.3	21	7.3	4	27
600361	10	163	15.9	23	7.5	4.2	37
600362	11	176	17.8	24.5	8	4.5	45
600363	12	186	19.4	26.5	8.5	4.7	55
600364	13	199	20.4	29.5	8.5	5.2	68
600365	14	210	22	31.5	9	5.2	83
600366	15	222	23.2	33.5	9.5	5.7	96
600367	16	234	24.8	36	10.5	6.2	121
600368	17	245	26.1	38	10.5	6.7	144
600369	18	257	27.7	40	11	7.2	165
600370	19	268	29.3	42	12	7.2	186
600371	20	280	31	44	12.5	7.7	225
600372	21	291	32.6	45.5	13	8.2	251
600373	22	303	34.1	46.5	13	8.2	266
600374	23	314	35.7	50.5	13	8.2	300
600375	24	330	37.3	52.5	14	8.5	382
600376	25	337	39	54.5	14.5	8.5	377
600377	26	349	40.1	56	15	8.5	422
600378	27	360	41.6	57.5	15	9	453
600379	28	373	43.2	59.5	15.5	9	532
600380	29	383	44.9	61.5	16	9.5	567
600381	30	395	46.5	63.5	16	10	632
600382	32	416	49	68	16.5	10.5	719
607019	35	500	53.5	78.8	20	13.6	1405
602601	36	500	53.5	78.8	20	13.6	1415
605838	38	515	58	82.8	20.5	14.1	1310



L

B2





B1

A2

A1

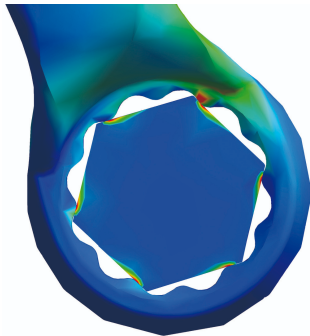
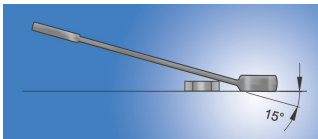


602602	41	540	62	86.8	21	14.6	1984
618514	46	560	69	94	23	16	2445
618517	50	580	75	103	24	17	1955
616752	55	600	83	112	26	18	3395
616753	60	620	91	120	28	20	4120
616754	65	640	100	130	30	21	5205
616756	75	680	116	150	34	24	6995
618491	1/4"	119	10.4	14.5	5	3.5	14
618492	5/16"	142	13.2	18.5	6.9	3.9	23
618493	3/8"	153	14.3	21	7.3	4	27
618494	7/16"	176	17.8	24.5	8	4.5	45
618495	1/2"	199	20.4	29.5	8.5	5.2	68
618496	9/16"	211	22	31.5	9	5.2	82
618497	5/8"	234	24.8	36	10.5	6.2	121
618498	11/16"	245	26.1	38	10.5	6.7	144
618499	3/4"	268	29.3	42	12	7.2	186
618500	13/16"	291	32.6	45.5	13	8.2	251
618501	7/8"	303	34.1	46.5	13	8.2	266
618502	15/16"	330	37.3	52.5	14	8.5	382
618503	1"	337	39	54.5	14.5	8.5	377
618504	1.1/16"	360	41.6	57.5	15	9	453
618505	1.1/8"	372	43.2	59.5	15.5	9	532
618506	1.1/4"	417	49	68	16.5	10.5	719
618507	1.5/16"	417	49	68	16.5	10.5	732
618508	1.3/8"	500	53.5	78.8	20	13.6	1425
618509	1.7/16"	500	53.5	78.8	20	13.6	1395
618510	1.1/2"	500	53.5	78.8	20	13.6	1335
618511	1.5/8"	540	62	86.8	21	14.6	2000
618512	1.11/16"	540	62	86.8	21	14.6	1960

		L	B2	B1	A2	A1		
618513	1.3/4"	560	69	94	23	16	2435	
618515	1.13/16"	560	69	94	23	16	2495	
618516	1.7/8"	560	69	94	23	16	2445	
618518	2"	580	75	103	24	17	2985	


* Images of products are symbolic. All dimensions are in mm, and weight is in grams. All listed dimensions may vary in tolerance.

Usage (pictures)



LIFE profile

Related products

 Combination wrench, short type

 Set of combination wrenches, long type in carton box

Safety (pictures)

