

短柄两用扳手

125/1



配置文件

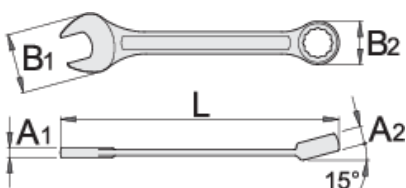


标准

ISO 7738

产品属性

- 材料:铬钒钢
- 落锻,完全淬火与回火
- 表面处理:根据ISO 1456:2009标准镀铬
- 头部抛光
- LIFE环形设计的梅花端头
- 根据标准ISO 7738生产(只限公制规格)
- 根据标准ISO 3113A中的3318生产(只限公制规格)



L

B2

B1

A2

A1





L

B2

B1

A2

A1

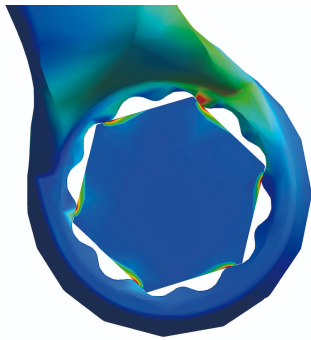
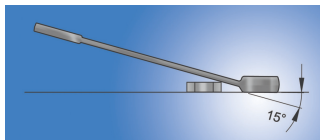


618651	5	84	5.8	12	3	3	9
618652	5.5	84	5.8	12	3	3	9
600414	6	100	10.4	14.5	5	3.5	11
600415	7	109	11.5	16.5	5.8	3.9	15
600416	8	119	13.2	18.5	6.9	3.9	20
600417	9	123	14.3	21	7.3	4	25
600418	10	128	15.9	23	7.5	4.2	29
600419	11	135	17.8	24.5	8	4.5	35
600420	12	139	19.4	26.5	8.5	4.7	45
600421	13	150	20.4	29.5	8.5	5.2	54
600422	14	160	22	31.5	9	5.2	63
600423	15	170	23.2	33.5	9.5	5.7	78
600424	16	180	24.8	36	10.5	6.2	95
600425	17	190	26.1	38	10.5	6.7	121
600426	18	200	27.7	40	11	7.2	135
600427	19	210	29.3	42	12	7.2	157
600428	20	220	31	44	12.5	7.7	186
600429	21	230	32.6	45.5	13	8.2	198
600430	22	247	34.1	46.5	13	8.2	230
602089	23	250	35.7	50.5	13	8.2	254
602090	24	266	37.3	52.5	14	8.5	300
602091	25	270	39	54.5	14.5	8.5	330
602092	26	275	40.1	56	15	8.5	342
602093	27	292	41.6	57.5	15	9	365
602094	28	296	43.2	59.5	15.5	9	432
602095	29	300	44.9	61.5	16	9.5	455
602096	30	323	46.5	63.5	16	10	522
602097	32	343	49	68	16.5	10.5	602
603332	36	400	54.5	79.5	20	13.5	1115

		L	B2	B1	A2	A1	
618566	41	420	62	86.8	21	14.6	1575
618570	46	440	69	94	23	16	1985

* Images of products are symbolic. All dimensions are in mm, and weight in grams. All listed dimensions may vary in tolerance.

用途 (pictures)



LIFE profile

Safety (pictures)

