

IBEX 콤비네이션 렌치

129/1



프로파일

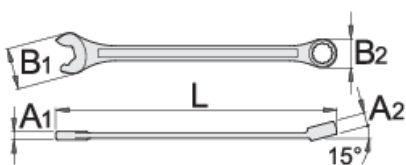


제품 특징

- 재질: 프리미엄 크롬 바나듐 스틸
- 낙하 단조, 완전 경화 및 담금질
- 표면 마감: ISO 1456:2009에 따른 크롬 도금
- 헤드 폴리싱 처리
- LIFE 프로파일이 있는 링 파트

장점:

- 렌치는 너트의 모서리를 보호하기 위해 평평한 부분에서 작동합니다.
- 더 큰 힘을 위한 3개의 드라이브 표면
- 100% 렌치 포지션
- 렌치를 제거하지 않고 되감기 동작 가능



611762



8

L

140

B2

13.2

B1

18.5

A2

6.9

A1





3.9



22

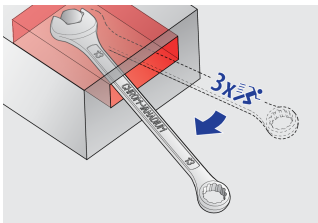


Till end of stock

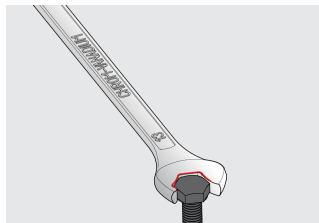
		L	B2	B1	A2	A1		
611763	10	160	15.9	23	7.5	4.2	37	Till end of stock
611764	11	174	17.8	24.5	8	4.5	43	Till end of stock
611765	12	183	19.4	26.5	8.5	4.7	54	Till end of stock
611766	13	196	20.4	29.5	8.5	5.2	63	Till end of stock
611767	14	206	22	31.5	9	5.2	75	Till end of stock
611768	15	217	23.2	33.5	9.5	5.7	93	Till end of stock
611769	16	227	24.8	36	10.5	6.2	114	Till end of stock
611770	17	238	26.1	38	10.5	6.7	131	Till end of stock
611930	18	250	28	40	11	7.2	155	Till end of stock
611771	19	261	29.3	42	12	7.2	173	Till end of stock
611772	22	296	34.1	46.5	13	8.2	258	Till end of stock
611773	24	321	37.3	52.5	14	8.5	321	Till end of stock

* Images of products are symbolic. All dimensions are in mm, and weight in grams. All listed dimensions may vary in tolerance.

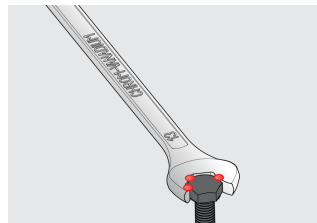
사용법 (사진)



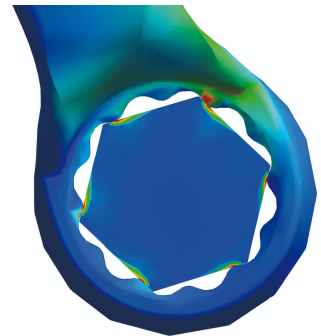
Enables 3-time faster work in comparison to standard combination wrench.



100% 렌치 포지션



더 큰 힘을 위한 3개의 드라이브 표면



LIFE 프로파일