

IBEX两用扳手

129/1



配置文件

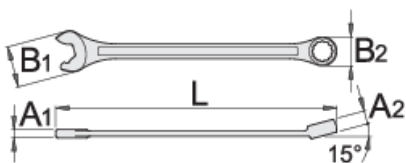


产品属性

- 材料:铬钒钢
- 落锻,完全淬火与回火
- 表面处理:根据ISO 1456:2009标准镀铬
- 头部抛光
- LIFE环形设计的梅花端头

优势:

- 扳手的扁平结构在使用上保护螺母的边角
- 3个驱动面提供更大的作用力
- 扳手100%定位
- 重复操作不必取下扳手



611762



8

L

140

B2

13.2

B1

18.5

A2



6.9

A1

3.9

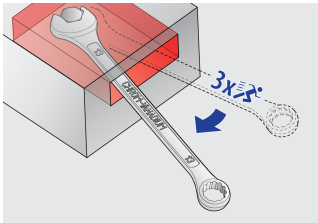


22

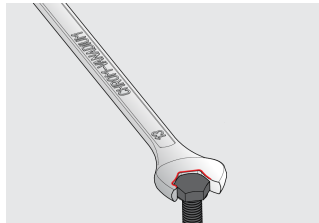
		L	B2	B1	A2	A1	
611763	10	160	15.9	23	7.5	4.2	37
611764	11	174	17.8	24.5	8	4.5	43
611765	12	183	19.4	26.5	8.5	4.7	54
611766	13	196	20.4	29.5	8.5	5.2	63
611767	14	206	22	31.5	9	5.2	75
611768	15	217	23.2	33.5	9.5	5.7	93
611769	16	227	24.8	36	10.5	6.2	114
611770	17	238	26.1	38	10.5	6.7	131
611930	18	250	28	40	11	7.2	155
611771	19	261	29.3	42	12	7.2	173
611772	22	296	34.1	46.5	13	8.2	258
611773	24	321	37.3	52.5	14	8.5	321

* Images of products are symbolic. All dimensions are in mm, and weight in grams. All listed dimensions may vary in tolerance.

用途 (pictures)



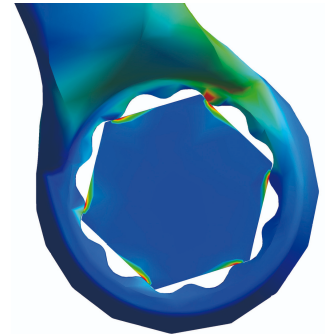
与标准组合扳手相比，提高3倍工作效率



扳手100%定位



3个驱动面提供更大的作用力



LIFE profile