

Crank cap tool metal

1609.1/2



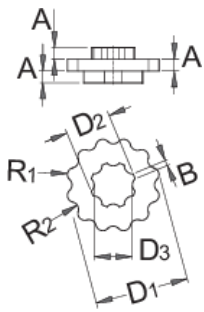
Profielen






Product attributen

- Strong magnet in the back of the wrench, enables the tool to be stored on a convenient place.
- Tool can be used by hand or with help of wrench size 13 mm.

How to use the tool:



	MA	MB	D1	D2	D3	R1	R1		
623120	110	80	32	15,4	13	2,3	2,5	33	33

* Afbeeldingen van producten zijn symbolisch. Alle afmetingen zijn in mm en gewicht in gram. Alle vermelde afmetingen kunnen variëren in tolerantie.