

内部轴承拉拔器

689/5BI



配置文件



产品属性

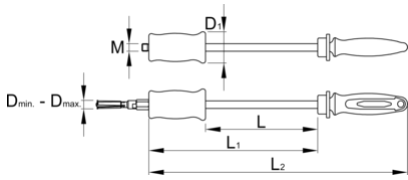
- 材料:优质铬钒钢
- 落锻, 完全淬火与回火
- surface finish: zinc plated according to ISO 2081:2018 (E)
- 符合人体工程学的重型双层材料组成的手柄

优势:

- 套装包括6件拉爪, 适用于以下内部轴承尺寸: 6.5-8、10-12、12-15、17-20、22-28、30-36

用途:

- 用于拉拔不同类型轴承轴承从内侧夹住并拉出
- 可拉拔1千克轴承

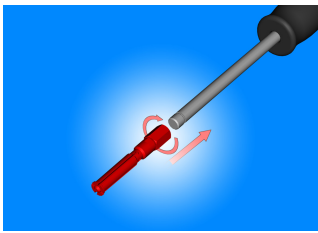


	D↓	D↑	D1	L	L1	L2	M	
--	-----------	-----------	-----------	----------	-----------	-----------	----------	--

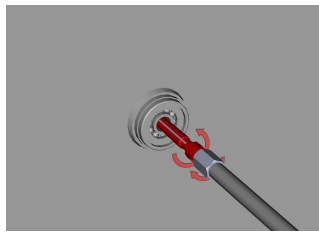
622587 6,5 36 50 180 271 415 M12 3300

* Images of products are symbolic. All dimensions are in mm, and weight in grams. All listed dimensions may vary in tolerance.

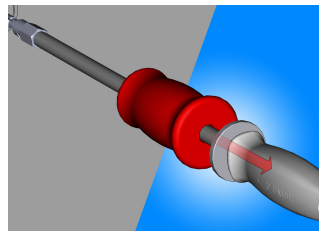
用途 (pictures)



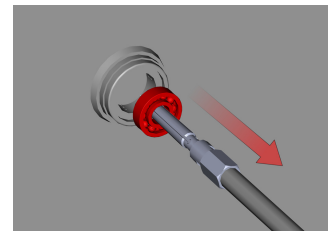
Before starting the application, you need to screw appropriate expandable collet dimension on the handle.



First inserted expandable collet through the hole in the bearing which will be extracted out of the housing. Then start to screw thorn into collet, which has a function that expands collet body, which adapts to the bearing bores.



Start with steady hits extracting bearing with help of sliding hammer.



After several strokes fast and easy extract bearing from housing without damage.

配件

689/2BI拉爪

Related products



Inner bearing puller

Frequently asked questions

What information is important for the 689/2BI puller (for internal bearing extraction) when selecting the appropriate arm of the puller?

The diameter of the inner bearing ring is important. Depending on the diameter, we select the appropriate arm for the puller.