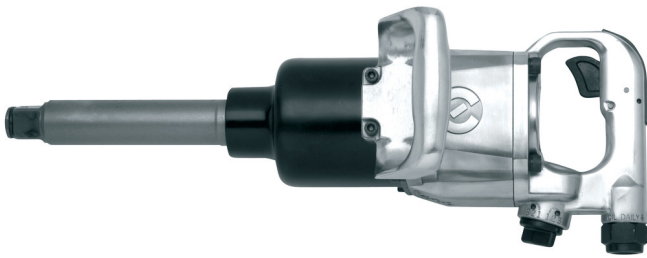


# Clé à chocs 1"

1591



## Profils



## Description produit

- Vitesse : 4000tr/min
- Couple max. : 2439 Nm
- Pression d'air maximum : 6, 2 bars
- Consommation d'air : 113 l/min
- entrée d'air : 1/2"
- Filet maximum M36

## Avantages :

- couple contrôlé
- vissage rapide
- large palette d'utilisations

## Utilisation:

- Industrie Automobile
- industrie aéronautique
- industrie agricole

- industrie lourde
- construction de machines
- industrie navale
- montage répétitif

## Important !

- Toujours utiliser des douilles à chocs UNIOR



		<b>B</b>	<b>L</b>		
615325	1"	650	495	2439	13000

\* Les images des produits ne sont pas contractuelles. Toutes les dimensions sont en mm, les poids en grammes.

## Accessories



Embout fileté



Raccord rapide fileté



Régulateur, épurateur, lubrificateur 3/4"



Tuyau pneumatique spiralé

## Safety tips



- The pressure in the tool during the operation has to be at least 6.2 bar for the tool to work properly.
- Regularly clean and dry the air filters and inlet air supply.
- Always use clean and dry air with the correct mixture of oil, for maximum tool life.



- Always disconnect tools not in use from the air supply.

- Check the joints and ensure that the tubes and other equipment are not damaged before use.
- All tools should be gently oiled prior to being stored.
- Always store pneumatic tools in dry places away from water.
- Always use original spare parts.
- Repairs can be performed only by authorised staff people authorised by Unior d.d.