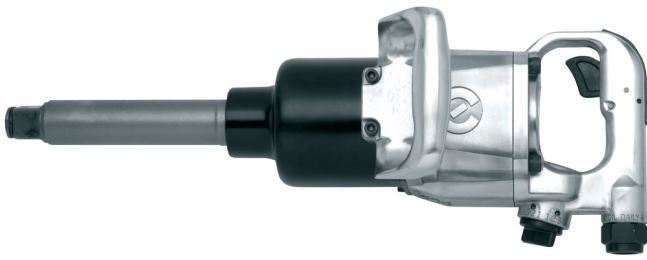


# 1"气锤

1591



## 配置文件



## 产品属性

- 每分钟4000转的空载转速
- 最大扭矩2439 Nm
- 最大气压：6.2 Bar
- 空气消耗量340 升/分钟
- 1/2"进气口
- 最大螺栓尺寸M36

## 优势：

- 控制扭力
- 快速拧紧
- 应用范围广泛

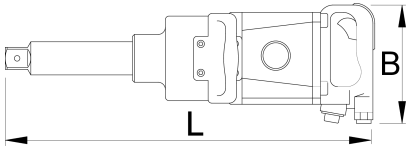
## 用途：

- 汽车行业
- 航空业
- 农业设备

- 重工业
- 大型建筑机械
- 造船业
- 单独安装

### 重要事项！

- 务必使用Unior气动套筒



		<b>B</b>	<b>L</b>		
615325	1"	650	495	2439	13000

\* Images of products are symbolic. All dimensions are in mm, and weight in grams. All listed dimensions may vary in tolerance.

## Accessories



气动管接头



气动管接头



3/4"气动过滤调节器和润滑器



螺旋气动软管

## Safety tips



- The pressure in the tool during the operation has to be at least 6.2 bar for the tool to work properly.
- Regularly clean and dry the air filters and inlet air supply.
- Always use clean and dry air with the correct mixture of oil, for maximum tool life.



- Always disconnect tools not in use from the air supply.

- Check the joints and ensure that the tubes and other equipment are not damaged before use.
- All tools should be gently oiled prior to being stored.
- Always store pneumatic tools in dry places away from water.
- Always use original spare parts.
- Repairs can be performed only by authorised staff people authorised by Unior d.d.