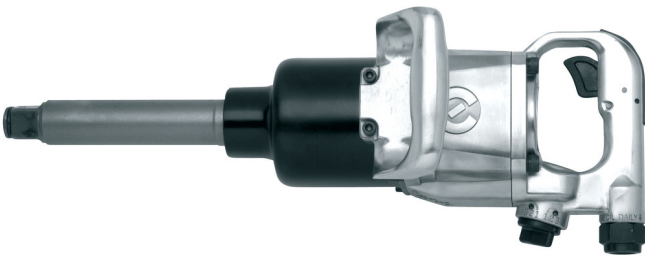


Impact wrench

1591



Profiles



Product features

- free speed 4000 revolution per minutes
- max. torque 2439 Nm
- maximum air pressure: 6,2 Bar
- air consumption 340 l/min
- air inlet 1/2"
- max bolt size M36

Advantages:

- controlled torque
- fast screwing
- wide range of use

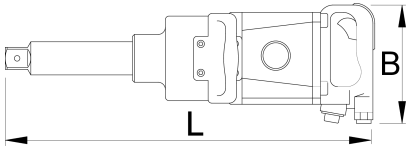
Usage:

- car industry
- aircraft industry
- agricultural equipment

- heavy industry
- larger construction machinery
- shipbuilding industry
- individual mounting

Important!

- Always use Unior IMPACT sockets.



		B	L		
615325	1"	650	495	2439	13000

* Images of products are symbolic. All dimensions are in mm, and weight in grams. All listed dimensions may vary in tolerance.

Accessories



Coupling, male part



Coupling, female part



Pneumatic filter regulator and lubricator 3/4"



Spiral pneumatic hose

Safety tips



- The pressure in the tool during the operation has to be at least 6.2 bar for the tool to work properly.
- Regularly clean and dry the air filters and inlet air supply.
- Always use clean and dry air with the correct mixture of oil, for maximum tool life.



- Always disconnect tools not in use from the air supply.

- Check the joints and ensure that the tubes and other equipment are not damaged before use.
- All tools should be gently oiled prior to being stored.
- Always store pneumatic tools in dry places away from water.
- Always use original spare parts.
- Repairs can be performed only by authorised staff people authorised by Unior d.d.