

工具柜

948E2



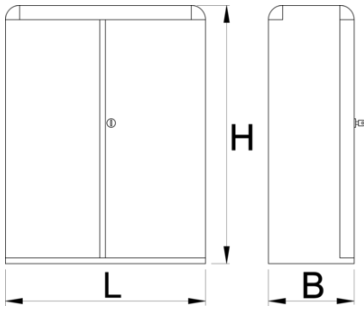
配置文件





产品属性

- 材料:金属板材
- 锁紧装置
- lock with key included also foam keyring
- 环保无铅镉涂层

- 环保无铅镉涂层



	L	B	H	
612216	700	300	900	26000

* Images of products are symbolic. All dimensions are in mm, and weight in grams. All listed dimensions may vary in tolerance.

用途 (pictures)



Accessories



948E1附件



螺丝刀架



锤子架



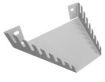
挂架



钳子架



螺丝刀架



扳手架



挂钩



双钩

Related products



柜子



工作台挂柜