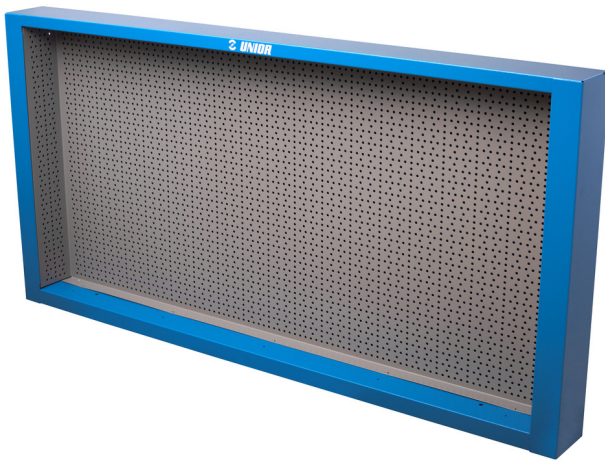


# 946A工具柜

990CWR

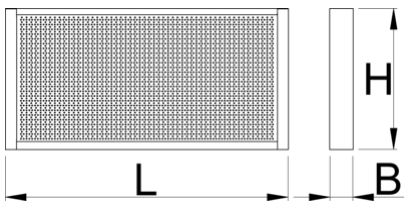


## 配置文件



## 产品属性

- 材料:金属板材
- 环保无铅镉涂层
- 带30个挂钩



625669

L

1000

B

125

H

740



18600



L

B

H



612329

1500

125

740

26300

\* Images of products are symbolic. All dimensions are in mm, and weight in grams. All listed dimensions may vary in tolerance.

## Accessories



螺丝刀架



锤子架



挂架



钳子架



螺丝刀架



扳手架



挂钩



双钩

## Related products



柜子



工作台挂柜