

# Tool carriage Hercules

940H3



## Profiles



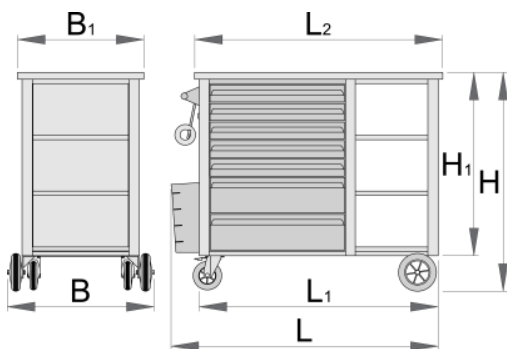
## Product attributes

- material: premium PLUS sheet metal
- central locking system with a lock and folding key
- lock with key included also foam keyring
- oil and acid resistant casters of a diameter of 125mm, one with brake, which blocks spinning and swiveling of the caster
- full extension drawers with top quality ball-bearing slides
- opening and closing of drawers is very simple due to the uniform solution - drawer handle on the upper side enables users a synchronic grip and opening of a carriage drawer.

- the synthetic covering protects drawers and tools from damage
- coated with eco colour of Qualicoat quality standard
- 7 front drawers (5x L 563 x W 365 x H 70mm, 2x L 563 x W 383 x H 150mm)
- basic dimensions with handle and casters L 1182 x W 640 x H 955 mm
- total volume of drawers: 133 litres
- one side with shelves
- wooden worktop
- static load capacity of carriages without casters: 2300 kg
- dynamic load capacity of carriages: 550 kg
- capacity of front drawers: 45 kg
- drawers compatible with SOS tool trays 1/3, 2/3, 3/3

### Advantages:

- Perforated wall on the back side of the tool carriage allows hanging tools with tool hooks
- As an accessories available also a spray holder for easy storage of sprays up to fi 68mm, and a back door with a lock



615512

L

1182

L1

1040

L2

1080

B

640

B1

550

H

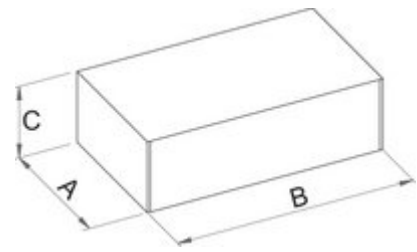
955

H1

800



94200



## Retail packaging

	MA	MB	MC	
615512	590	1120	835	94200

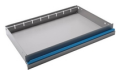
## Transport packaging

		TA	TB	TC	
615512	1	590	1120	835	94200

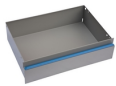
## Spare parts



Lock with keys



Small drawer 940EV



Big drawer Eurovision



Ball-bearing slide 940E1-9



Set of casters



Swivel caster with brake



Synthetic covering for drawers 940E1-9, H1, H2, H3



Synthetic covering for the drawers 940E1-9, H1, H2, H3, M1, M2, M3



Handle 940H1, H2, H3