

Alet arabası Avrupa stili

940E4/1L



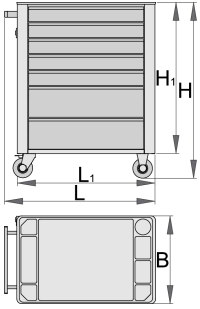
Profiles



Product features

- malzeme: sac metal
- kilitleme sistemi
- lock with key included also foam keyring
- biri frenli 4 tekerlek
- bilyalı sürgülü çekmeceler
- sentetik örtü çekmeceleri ve aletleri hasarlardan korur
- aksesuar ekleme olanağı
- kadmiyum ve kurşun içermeyen renkle ekolojik lake kaplamalıdır

- 7 çekmece (beş çekmecenin boyutları: 560x365x70mm, iki çekmecenin boyutları: 560x400x150mm)
- tutamak ve tekerleklerle temel ölçüler U 760 x G 440 x Y 895 mm
- toplam çekmece hacmi: 140 litre
- arabanın tekerleksiz statik yük kapasitesi: 1600kg
- arabaların dinamik yük kapasitesi: 300 kg
- her çekmecenin maksimum kapasitesi: 45kg
- sol ve sağ tarafları delikli
- 50mm boyutunda 10 kanca dahildir
- arabanın üstünde ABS tepsisi bulunur
- SOS alet tepsileri ile uyumlu çekmeceler 1/3, 2/3, 3/3



	L	B	H	L1	H1	
612138	770	448	895	700	768	53000

* Ürünlerin resimleri semboliktir. Bütün boyutlar mm ve ağırlık gram cinsindedir.

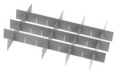
Accessories



Alet sandığı Eurostyle - 3 bölmeli



Alet sandığı Eurostyle - 5 bölmeli



940E ve 940EV küçük çekmece için ara bölme takımı



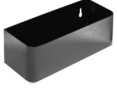
940E ve 940EV için 4 parçalı ara bölme takımı



940EV için kağıt tutucu



940E ve 940EV için belge gözü



940E ve 940EV için şişelik



940E ve 940EV için ABS plaka



940E ve 940EV için ahşap plaka



940E ve 940EV için tornavida askısı



920PLUS, 940E ve 940EV için boş SOS alet tepsi

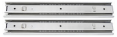


920PLUS, 940E ve 940EV için boş SOS alet tepsi

Spare parts



Lock with keys



Bilyalı sürgü ray 940E1-9



Set of casters

Safety tips



- Lock all your drawers before trying to roll the tool carriage into a new work area.
- Set the brakes on the locking casters after you have rolled the cabinet to your work area.
- Treat you tool carriage, tool chests, or tool boxes with respect.
- Always follow the prescribed max load capacity of individual drawers and the carriage as a whole.



- Don't open two or more drawers at the same time, there is high chance of it tipping over.
- Don't throw tools into drawer, always put the tools in.
- Don't use an opened drawer as a working surface.
- Don't clean a lacquered surface with a solvent cleaner.
- Don't pull a tool carriage as you won't be able to see where you are headed. Push it in front of you

- Always put heavier objects in the bottom drawers
- Always close drawers when not in use.
- Always follow manufacturer manual instructions regarding assembly and repair of your tools.

so you can see where you are going.

- Don't stack a tool carriage with too many extra chests or tool trays; it may tip over at the most unexpected time.
- Don't roll a tool carriage with loose tools or parts on top of the carriage.
- Don't roll a tool carriage too quickly; a pot hole in the floor or some hardware on the floor may cause an accident.
- Don't overload the drawers; if you haven't got room for all of your tools, you need a larger tool carriage.
- Don't open up too many loaded drawers at a time; close each drawer before opening up another. Heavily loaded opened drawers are an invitation to tipping.