

# Alet arabası Avrupa stili

940E1



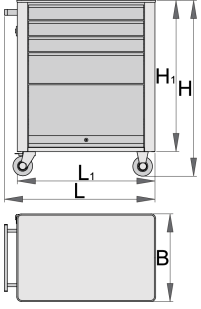
## Profiles





## Product features

- malzeme: sac metal
- kilitleme sistemi
- lock with key included also foam keyring
- Biri frenli 4 tekerlek
- Bilyalı sürgülü çekmeceler
- sentetik örtü, çekmecelerin ve aletlerin zarar görmesini önler

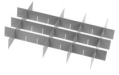
- Kadmiyum ve kurşunsuz renkle ekolojik lake kaplama
- 4 çekmece (üç çekmecenin boyutları: 560x365x70mm, bir çekmecenin boyutları: 560x400x150mm)
- kilit sistemli kayar kapı
- tutamak ve tekerleklerle temel ölçüler U 760 x G 440 x Y 895 mm
- toplam çekmece hacmi: 76 litre
- arabanın tekerleksiz statik yük kapasitesi: 1600 kg
- her çekmecenin azami kapasitesi: 45 kg
- arabaların dinamik yük kapasitesi: 300 kg
- SOS alet tepsileri ile uyumlu çekmeceler 1/3, 2/3, 3/3
- aksesuar ekleme olanağı



	L	B	H	L1	H1	
608542	770	440	895	700	768	42000

\* Ürünlerin resimleri semboliktir. Bütün boyutlar mm ve ağırlık gram cinsindendir.

## Accessories



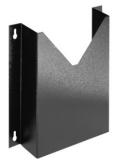
940E ve 940EV küçük çekmece için ara bölme takımı



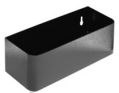
940E ve 940EV için 4 parçalı ara bölme takımı



940EV için kağıt tutucu



940E ve 940EV için belge gözü



940E ve 940EV için şişelik



940E ve 940EV için ABS plaka



940E ve 940EV için ahşap plaka



940E ve 940EV için tornavida askısı



940PLUS, 940EM, 940H, 940E ve 940EV için boş SOS alet tepsi



920PLUS, 940E ve 940EV için boş SOS alet tepsi

## Spare parts



Set of locks with keys



Bilyalı sürgü ray 940E1-9



Set of casters

## Safety tips



- Lock all your drawers before trying to roll the tool carriage into a new work area.
- Set the brakes on the locking casters after you have rolled the cabinet to your work area.
- Treat you tool carriage, tool chests, or tool boxes with respect.
- Always follow the prescribed max load capacity of individual drawers and the carriage as a whole.
- Always put heavier objects in the bottom drawers
- Always close drawers when not in use.
- Always follow manufacturer manual instructions regarding assembly and repair of your tools.



- Don't open two or more drawers at the same time, there is high chance of it tipping over.
- Don't throw tools into drawer, always put the tools in.
- Don't use an opened drawer as a working surface.
- Don't clean a lacquered surface with a solvent cleaner.
- Don't pull a tool carriage as you won't be able to see where you are headed. Push it in front of you so you can see where you are going.
- Don't stack a tool carriage with too many extra chests or tool trays; it may tip over at the most unexpected time.
- Don't roll a tool carriage with loose tools or parts on top of the carriage.
- Don't roll a tool carriage too quickly; a pot hole in the floor or some hardware on the floor may cause an accident.
- Don't overload the drawers; if you haven't got room for all of your tools, you need a larger tool carriage.

- Don't open up too many loaded drawers at a time; close each drawer before opening up another. Heavily loaded opened drawers are an invitation to tipping.