

# Carrello portautensili "EUROSTYLE"

940E1



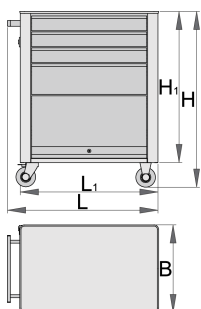
## Profili



## Attributi del prodotto

- materiale: lamiera di metallo PLUS premium
- sistema di chiusura
- serratura con chiave inclusa, portachiavi in schiuma
- 4 ruote, una con freno
- cassetti con guide con cuscinetti a sfere
- la copertura sintetica protegge i cassetti e gli utensili da danneggiamenti

- laccatura ecologica con colori senza cadmio e piombo
- 4 cassette (3 dim. 560x365x70 mm, 1 dim. 560x400x150 mm)
- porta scorrevole verso l'alto con sistema di chiusura
- dimensioni standard con maniglia e ruote 760x440x895 mm
- volume totale cassette: 76 litri
- capacità statica di carico dei carrelli senza ruote: 1600 kg
- portata dei cassette: 45 kg
- capacità dinamica di carico dei carrelli: 300 kg
- cassette compatibili con vassoi portautensili SOS 1/3, 2/3, 3/3
- possibilità di aggiungere accessori



	L	B	H	L1	H1	
608542	770	440	895	700	768	42000

\* Le immagini dei prodotti sono puramente simboliche. Tutte le dimensioni sono in mm, peso in grammi.

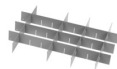
## Accessories



Cassettiera portautensili Eurostyle - 3 scomparti



Cassettiera portautensili Eurostyle - 5 scomparti



Serie di separatori per cassetto piccolo per 940E e 940EV



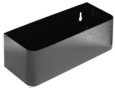
Serie di separatori - 4 pezzi per 940E



Portacarta per carrello art. 940EV



Portadocumenti per carrelli art. 940E e 940EV



Portabottiglie per carrelli art. 940E e 940EV



Vassoio in ABS per carrelli art. 940E e 940EV



Piastra in legno per carrelli art. 940E e 940EV



Aggancio per cacciaviti per 940E e 940EV



Vassoio portautensili SOS vuoto per carrelli art. 940PLUS, 940EM, 940H, 940E e 940EV

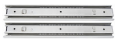


Vassoio portautensili SOS vuoto per carrelli art. 920PLUS, 940E e 940EV

## Parti di ricambio



Set di serrature con chiavi



Guida con cuscinetti a sfera



Set di ruote

## Safety tips



- Lock all your drawers before trying to roll the tool carriage into a new work area.
- Set the brakes on the locking casters after you have rolled the cabinet to your work area.
- Treat you tool carriage, tool chests, or tool boxes with respect.
- Always follow the prescribed max load capacity of individual drawers and the carriage as a whole.
- Always put heavier objects in the bottom drawers



- Don't open two or more drawers at the same time, there is high chance of it tipping over.
- Don't throw tools into drawer, always put the tools in.
- Don't use an opened drawer as a working surface.
- Don't clean a lacquered surface with a solvent cleaner.
- Don't pull a tool carriage as you won't be able to see where you are headed. Push it in front of you so you can see where you are going.

- Always close drawers when not in use.
- Always follow manufacturer manual instructions regarding assembly and repair of your tools.

- Don't stack a tool carriage with too many extra chests or tool trays; it may tip over at the most unexpected time.
- Don't roll a tool carriage with loose tools or parts on top of the carriage.
- Don't roll a tool carriage too quickly; a pot hole in the floor or some hardware on the floor may cause an accident.
- Don't overload the drawers; if you haven't got room for all of your tools, you need a larger tool carriage.
- Don't open up too many loaded drawers at a time; close each drawer before opening up another. Heavily loaded opened drawers are an invitation to tipping.