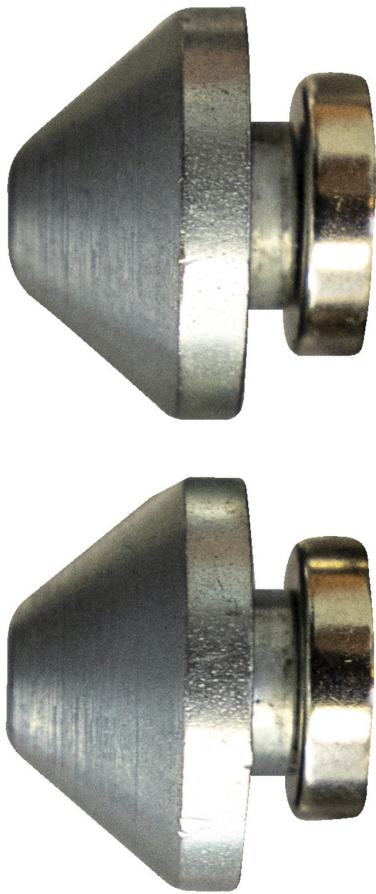


액슬 어댑터

1689.3



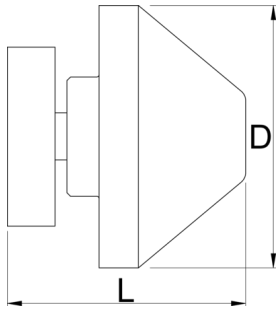
프로파일







제품 특징

- Through axle adapters are compatible with 12, 15 and 20mm standards.

- Magnetic so you can store them anywhere on the stand when not in use.
- Bolts to hold them securely in place in use.



			D	L	
629321	12, 15, 20	2	22	20	57

* Images of products are symbolic. All dimensions are in mm, and weight in grams. All listed dimensions may vary in tolerance.

사용법 (사진)

