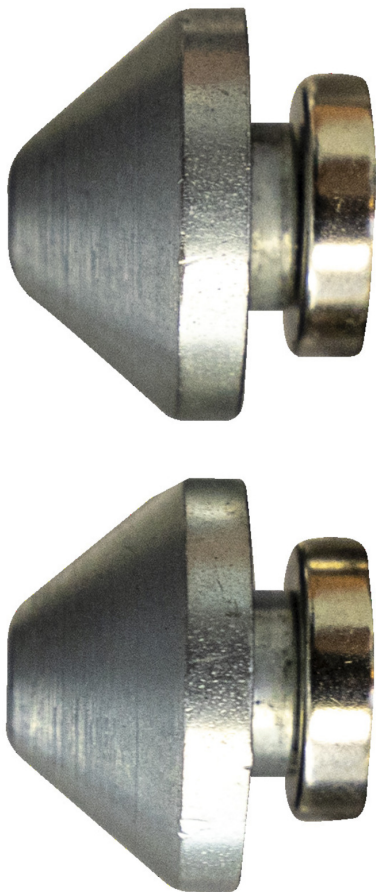


Adattatore per ruote con perno passante da 20 mm.

1689.3

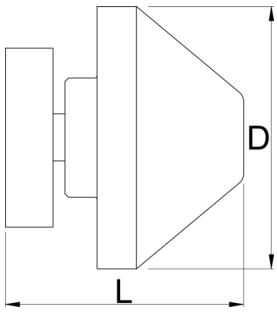


Profili



Attributi del prodotto

- Through axle adapters are compatible with 12, 15 and 20mm standards.
- Magnetic so you can store them anywhere on the stand when not in use.
- Bolts to hold them securely in place in use.



					
629321	12, 15, 20	2	22	20	57

* Le immagini dei prodotti sono puramente simboliche. Tutte le dimensioni sono in mm, peso in grammi.

Utilizzo (pictures)

