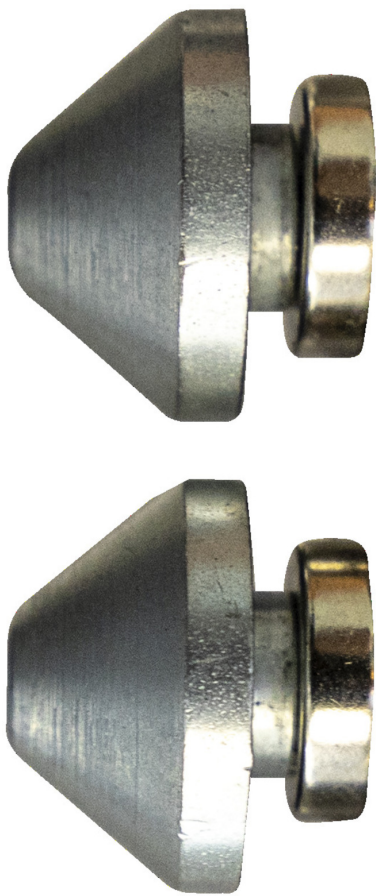


Axle adaptor

1689.3



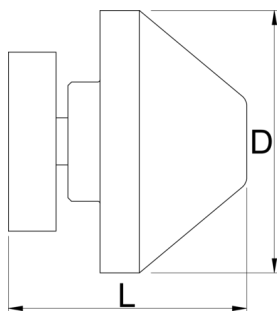
Profiles



Product features

- Through axle adapters are compatible with 12, 15 and 20mm standards.

- Magnetic so you can store them anywhere on the stand when not in use.
- Bolts to hold them securely in place in use.



			D	L	
629321	12, 15, 20	2	22	20	57

* Images of products are symbolic. All dimensions are in mm, and weight is in grams. All listed dimensions may vary in tolerance.

Usage (pictures)

